

## Erratum

# Magnetic resonance imaging monitoring therapeutic response to dendritic cell vaccine in murine orthotopic pancreatic cancer models: Am J Cancer Res. 2019; 9(3): 562-573

Liang Pan<sup>1,2\*</sup>, Na Shang<sup>2\*</sup>, Junjie Shangguan<sup>2</sup>, Matteo Figini<sup>2</sup>, Wei Xing<sup>1</sup>, Bin Wang<sup>3</sup>, Chong Sun<sup>4</sup>, Jia Yang<sup>2</sup>, Yaqi Zhang<sup>2</sup>, Su Hu<sup>2</sup>, Quanhong Ma<sup>2</sup>, Jian Wang<sup>2,5</sup>, Yury Velichko<sup>2,6</sup>, Vahid Yaghmai<sup>2,6</sup>, Al B III Benson<sup>6,7</sup>, Zhuoli Zhang<sup>2,6</sup>

<sup>1</sup>Department of Radiology, Third Affiliated Hospital of Soochow University, Changzhou 213003, Jiangsu, China;

<sup>2</sup>Department of Radiology, Feinberg School of Medicine, Northwestern University, Chicago 60611, IL, USA;

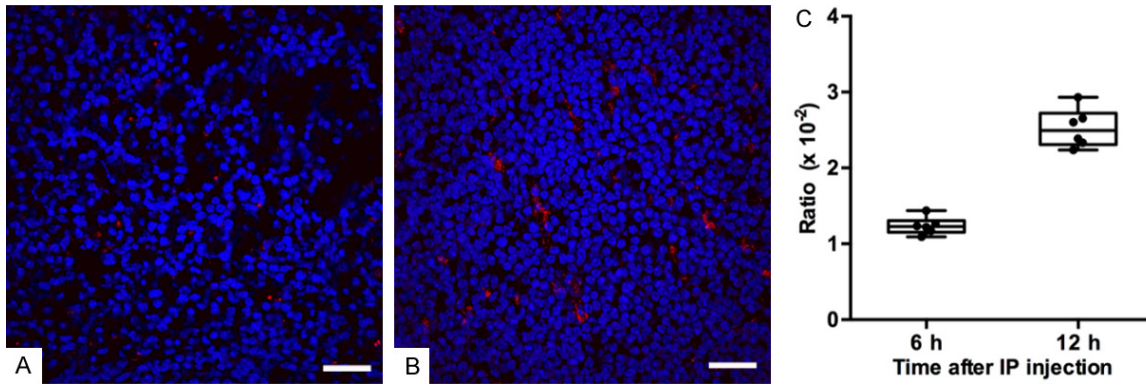
<sup>3</sup>Department of Surgery, Second Affiliated Hospital, Zhejiang University School of Medicine, Hangzhou 310009, Zhejiang, China; <sup>4</sup>Department of Orthopedics, Affiliated Hospital of Qingdao University, Qingdao 266005, Shandong, China; <sup>5</sup>Department of Radiology, Southwest Hospital, Third Military Medical University, Chongqing 400038, China; <sup>6</sup>Robert H. Lurie Comprehensive Cancer Center, Chicago 60611, IL, USA; <sup>7</sup>Department of Hematology and Oncology, Feinberg School of Medicine, Northwestern University, Chicago 60611, IL, USA. \*Equal contributors.

Received June 15, 2020; Accepted June 16, 2020; Epub July 1, 2020; Published July 15, 2020

We have noticed an inadvertent error in our article “Magnetic resonance imaging monitoring therapeutic response to dendritic cell vaccine in murine orthotopic pancreatic cancer models”.

The published **Figure 3** demonstrates the migration of Panc02-pulsed dendritic cells to spleens after Intraperitoneal injection. Mistakenly, the wrong picture was used in **Figure 3A** which should present the fluorescent microscopy image of spleen harvested 6 h after IP injection. We have attached **Figure 3** with the corrected sub-**Figure 3A**. This error does not change the **Figure 3** legend and the scientific conclusions of this manuscript in any way. The authors sincerely apologize for this error.

**Address correspondence to:** Wei Xing, Department of Radiology, The Third Affiliated Hospital of Soochow University, 185 Juqian Street, Changzhou 213003, Jiangsu, China. E-mail: suzhxingwei@suda.edu.cn; Dr. Zhuoli Zhang, Robert H. Lurie Comprehensive Cancer Center, Feinberg School of Medicine, Northwestern University, 737 N. Michigan Ave, Chicago 60611, IL, USA. E-mail: zhuoli-zhang@northwestern.edu



**Figure 3.** The migration of Panc02-pulsed DCs to spleens after IP injection. A. The representative fluorescent microscopy image of spleen harvested 6 h after IP injection (scale bar: 50  $\mu$ m). B. The representative fluorescent microscopy image of spleen harvested 12 h after IP injection (scale bar: 50  $\mu$ m). The PKH26-labeled Panc02-pulsed DCs (red) were detected in spleen tissues (splenic cells, blue). C. A box plot of the ratio of PKH26 positive DCs amount to the total number of cells for spleens harvested 6 h and 12 h after IP injection. The box plot displays the full range of variation (from min to max), and dots indicate individual values. The positive DCs ratio for spleens harvested 12 h after IP injection was significantly higher than the ratio for spleens harvested 6 h after IP injection ( $P = 0.002$ ).