

Erratum

Polypyrimidine Tract-Binding Protein 1 promotes proliferation, migration and invasion in clear-cell renal cell carcinoma by regulating alternative splicing of PKM: Am J Cancer Res. 2017; 7(2): 245-259

Junyi Jiang^{1,3*}, Xu Chen^{2,3*}, Hao Liu^{2,3*}, Jing Shao^{3,4}, Ruihui Xie^{2,3}, Peng Gu^{2,3}, Chaohui Duan^{1,3}

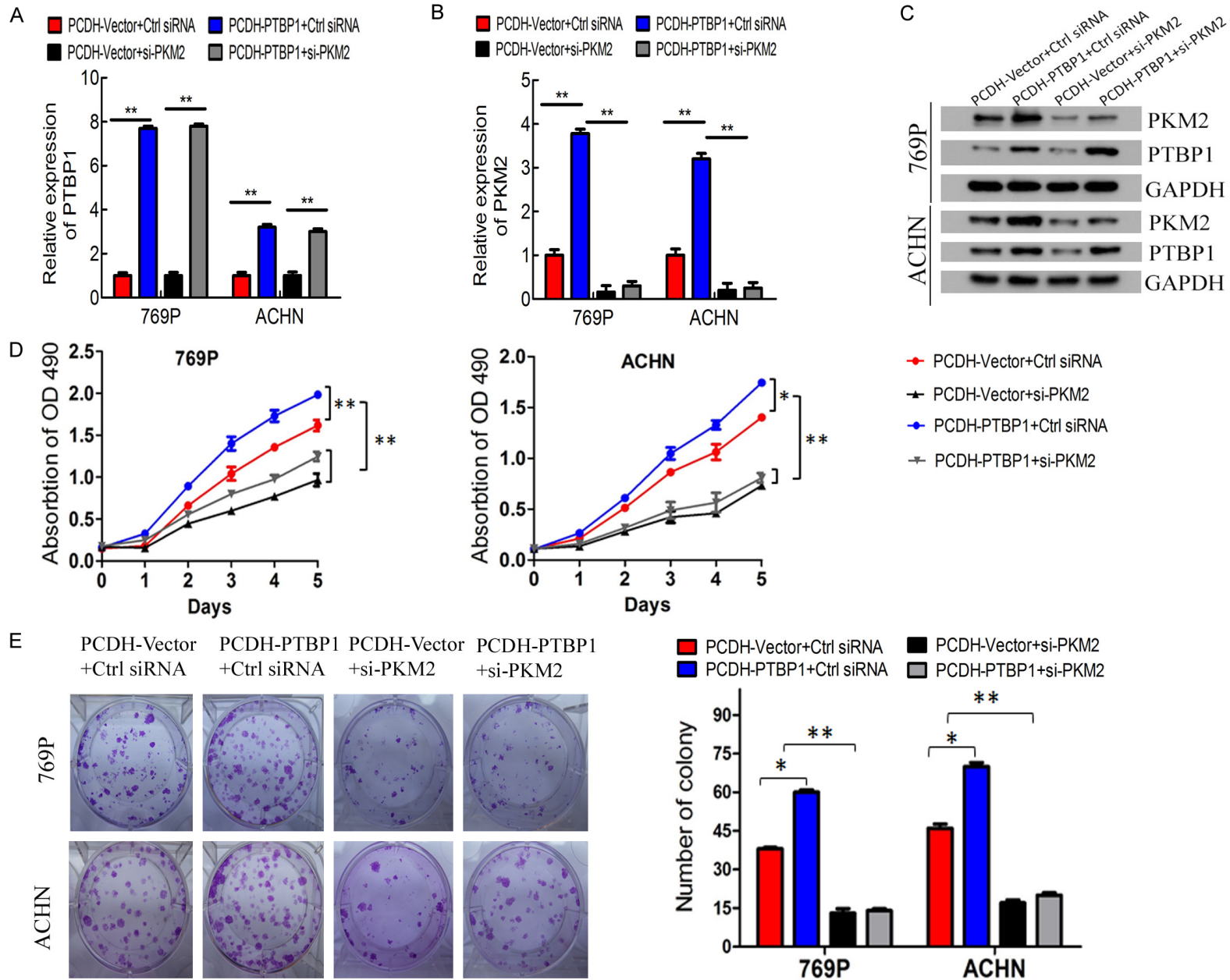
¹Department of Laboratory Medicine, Sun Yat-sen Memorial Hospital, Sun Yat-sen University, Guangzhou, China; ²Department of Urology, Sun Yat-sen Memorial Hospital, Sun Yat-sen University, Guangzhou, China; ³Guangdong Provincial Key Laboratory of Malignant Tumor Epigenetics and Gene Regulation, Sun Yat-sen Memorial Hospital, Sun Yat-sen University, Guangzhou, China; ⁴Medical Research Center, Sun Yat-sen Memorial Hospital, Sun Yat-sen University, Guangzhou, China. *Equal contributors.

Received December 4, 2020; Accepted December 11, 2020; Epub January 1, 2021; Published January 15, 2021

We rechecked this paper and realized that some data in **Figures 6F** and **7C** were unintentionally misplaced. We found the inadvertent errors occurred during figure layout. We have accordingly corrected and replaced the image in **Figures 6F** and **7C**. This correction has not changed the description, interpretation, or the original conclusions of the manuscript. The authors apologize for any inconvenience that caused by this unintentional misplacement.

Address correspondence to: Chaohui Duan, Department of Laboratory Medicine, Sun Yat-sen Memorial Hospital, 107th Yanjiangxi Road, Guangzhou, China. Tel: +86-13710658198; Fax: +86-20-81338062; E-mail: 1725012289@qq.com; Xu Chen, Department of Urology, Sun Yat-sen Memorial Hospital, 107th Yanjiangxi Road, Guangzhou, China. Tel: +86-13430306339; Fax: +86-20-81332336; E-mail: Joshua_18chen@163.com

PTBP1 promotes proliferation and metastasis by upregulating PKM2 in ccRCC



PTBP1 promotes proliferation and metastasis by upregulating PKM2 in ccRCC

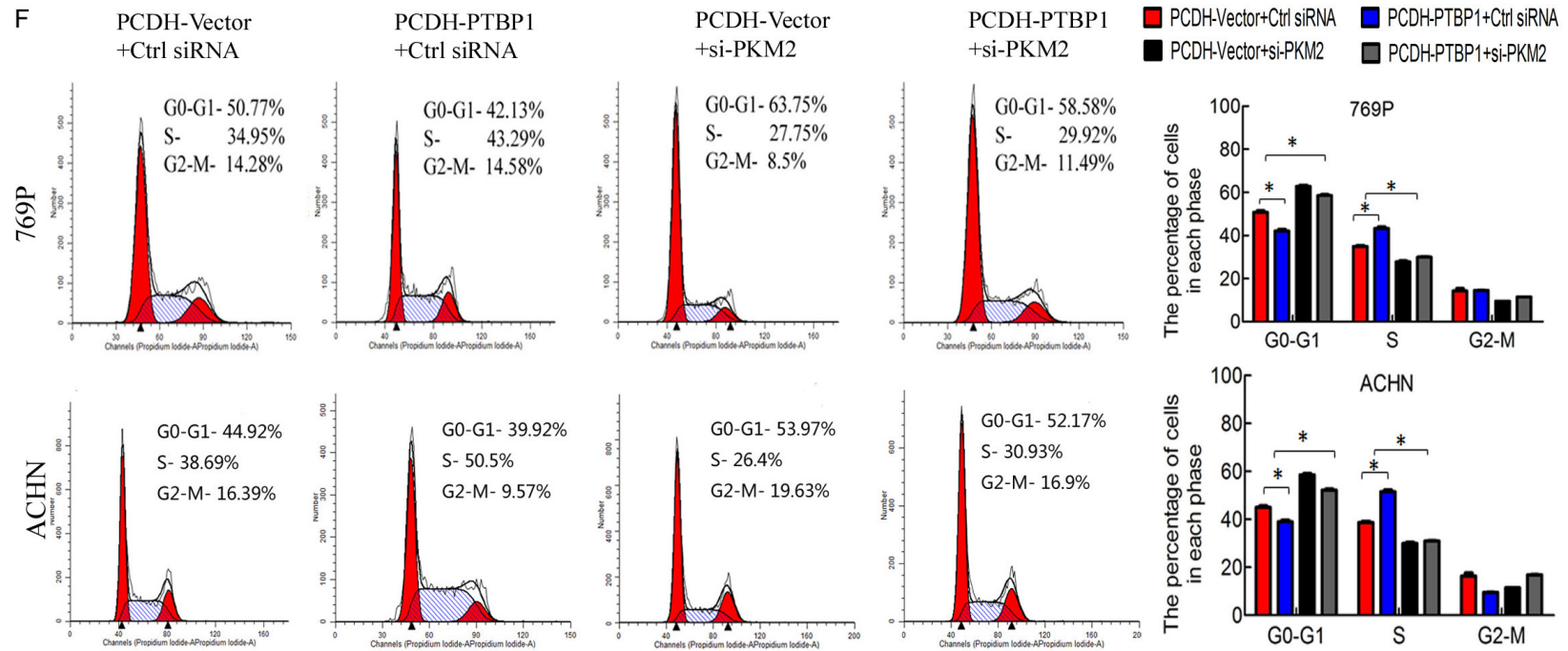


Figure 6. PKM2 silencing mainly abolished PTBP1-induced proliferation in ccRCC cells. A and B. Verification the efficiency of PTBP1 overexpression and PKM2 knockdown in 769P and ACHN cells by RT-qPCR. C. Verification of PKM2 knockdown efficiency by western blots. D. MTT assay evaluation of influence of PKM2 knockdown on 769P and ACHN cell viability. E. Colony formation assay evaluation the effect of PKM2 knockdown on 769P and ACHN cells. F. Flow cytometry analysis of 769P and ACHN cells transfected with control or PKM2 siRNA for 72 h. The percentages (%) of cell populations at different stages of the cell cycle are listed in the panels. All histograms show the percentage (%) (means \pm SD) of cell populations from three independent experiments. * $P < 0.05$, ** $P < 0.01$.

PTBP1 promotes proliferation and metastasis by upregulating PKM2 in ccRCC

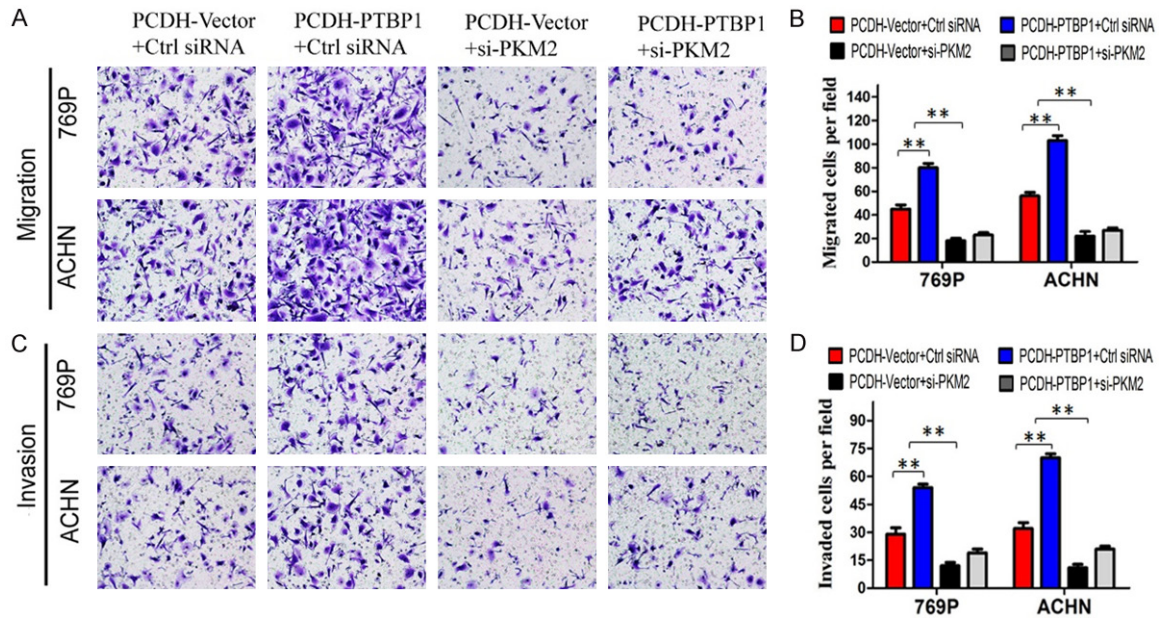


Figure 7. Knockdown of PKM2 abrogated the promotion of migration and invasion induced by PTBP1 overexpression in ccRCC cells. A and C. Representative pictures showing migrated and invasive cells under microscope (200 \times). B and D. All histograms represent the number (mean \pm SD) of migrated or invasive cells from three independent experiments. Statistical significance was calculated using the ANOVA. * $P < 0.05$, ** $P < 0.01$.