

Erratum

Elevated expression of flotillin-1 is associated with lymph node metastasis and poor prognosis in early-stage cervical cancer: Am J Cancer Res. 2016; 6(1): 38-50

Zheng Li^{1*}, Yang Yang^{2*}, Yang Gao¹, Xiaoliu Wu¹, Xielan Yang¹, Yingjie Zhu¹, Hongying Yang¹, Lin Wu³, Chengang Yang³, Libing Song⁴

¹Department of Gynecologic Oncology, The Third Affiliated Hospital of Kunming Medical University (Yunnan Tumor Hospital), 519 Kunzhou Road, Kunming 650118, Yunnan, China; ²Department of Internal Medicine, First People's Hospital of Nanning, Lang Dong Branch, 9 Yuebing Road, Nanning 530021, Guangxi, China; ³Department of Pathology, The Third Affiliated Hospital of Kunming Medical University (Yunnan Tumor Hospital), 519 Kunzhou Road, Kunming 650118, Yunnan, China; ⁴State Key Laboratory of Oncology in South China, Department of Experimental Research, Cancer Center, Sun Yat-sen University, 651 Dongfeng Road East, Guangzhou 510060, Guangdong, China. *Equal contributors.

Received September 5, 2021; Accepted October 14, 2021; Epub November 15, 2021; Published November 30, 2021

In this article, we recently found an unintentionally error. In **Figure 4B**, the representative image for SiHa-RNAi#1-0 h was misused. The corrected **Figure 4B** is shown below. On behalf of all authors, I would like to publish this Erratum and this correction does not affect the description, interpretation, and conclusions of the manuscript. Meanwhile, no change to the original figure legends is needed.

Address correspondence to: Zheng Li, Department of Gynecologic Oncology, The Third Affiliated Hospi-

tal of Kunming Medical University (Yunnan Tumor Hospital), 519 Kunzhou Road, Kunming 650118, Yunnan, China. Tel: +86-871-68185656; Fax: +86-871-68185656; E-mail: lengyueds@outlook.com; Libing Song, State Key Laboratory of Oncology in South China, Department of Experimental Research, Cancer Center, Sun Yat-sen University, 651 Dongfeng Road East, Guangzhou 510060, Guangdong, China. Tel: +86-20-87343088; Fax: +86-20-87343392; E-mail: songlb@sysucc.org.cn

Flotillin-1 facilitates lymph node metastasis in cervical cancer

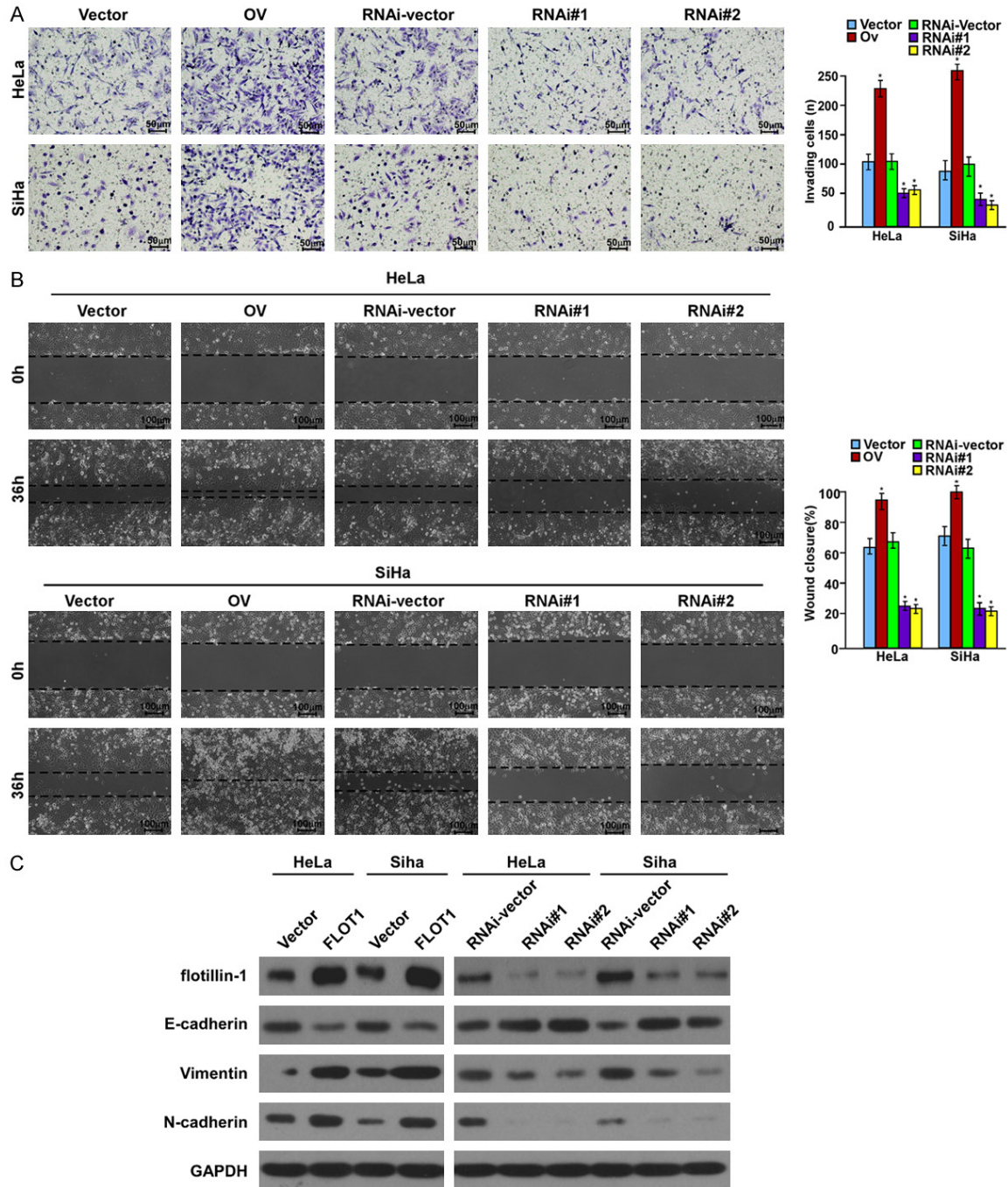


Figure 4. Flotillin-1 promotes cervical cancer cell motility and invasion through EMT. A. Invasion ability induced by FBS as analyzed by Transwell migration assay ($\times 200$, $*P < 0.001$). B. Motility as measured by testing the wound closure rate at 0 and 36 h ($\times 200$, $*P < 0.001$). C. Western blotting analysis of the expression of flotillin-1 and EMT markers. OV: Cells transfected with flotillin-1 cDNA; RNAi-vector: cells transfected with scramble shRNA; RNAi#1/RNAi#2: cells transfected with two human shRNA sequences to repress flotillin-1.