

## Erratum

# Downregulation of circ-TRPS1 suppressed prostatic cancer prognoses by regulating miR-124-3p/EZH2 axis-mediated stemness: Am J Cancer Res. 2020; 10(12): 4372-4385

Jianjun Sha<sup>1\*</sup>, Lei Xia<sup>1\*</sup>, Qing Han<sup>2\*</sup>, Chenfei Chi<sup>1</sup>, Yinjie Zhu<sup>1</sup>, Jiahua Pan<sup>1</sup>, Yiran Huang<sup>1</sup>, Weiliang Xia<sup>2</sup>,  
Baijun Dong<sup>1</sup>, Wei Xue<sup>1</sup>, Chen Yang<sup>3</sup>

<sup>1</sup>Department of Urology, Renji Hospital, School of Medicine, Shanghai Jiaotong University, Shanghai 200127, China; <sup>2</sup>School of Biomedical Engineering, Shanghai Jiaotong University, Shanghai 200240, China; <sup>3</sup>Fudan Institute of Urology, Huashan Hospital, Fudan University, Shanghai 200040, China. \*Co-first authors.

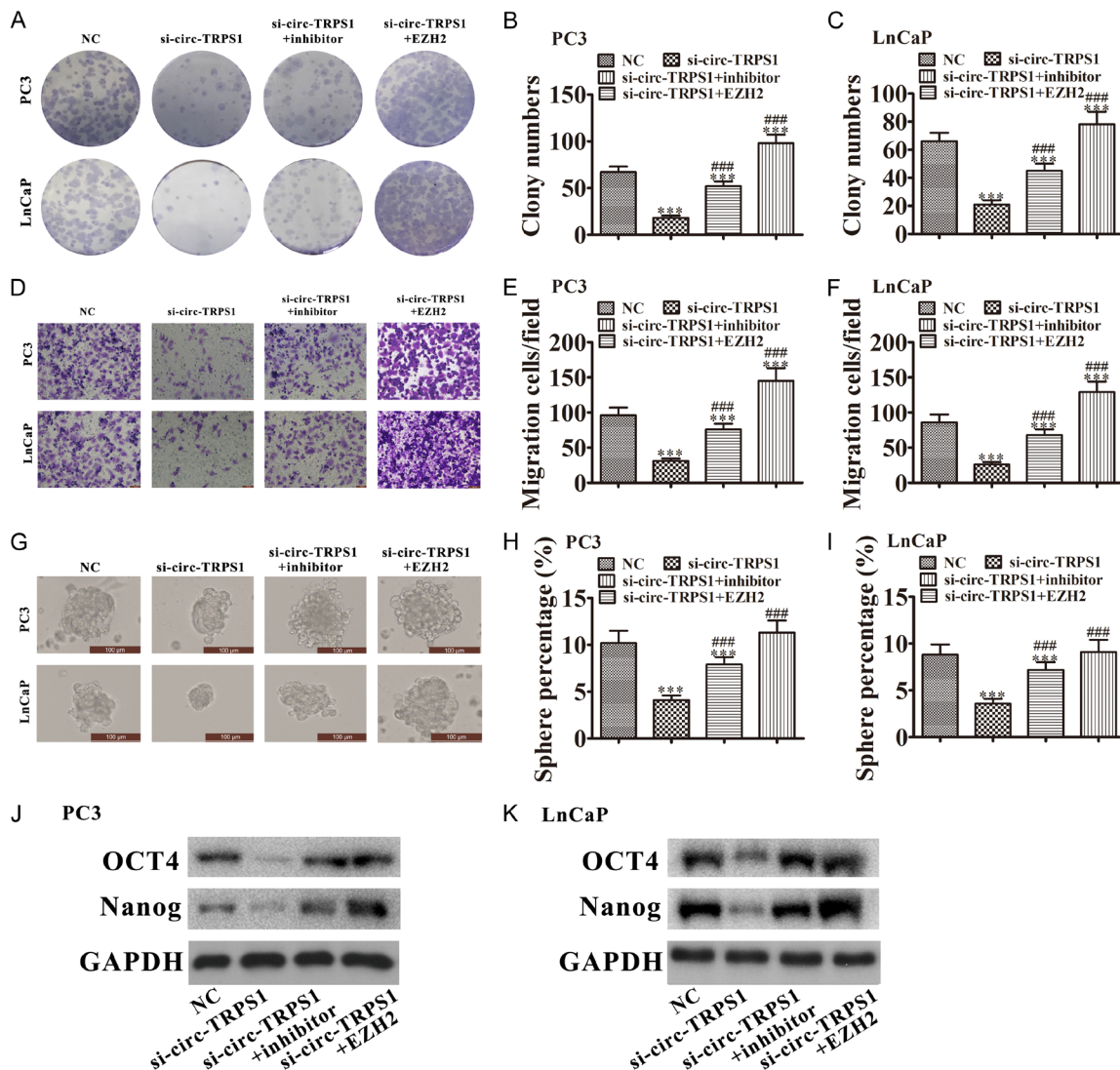
Received November 3, 2022; Accepted November 27, 2022; Epub December 15, 2022; Published December 30, 2022

In this article, a mistake has been found during assembly of paper and proof-checking in **Figure 5**. The correct content is shown below.

**Address correspondence to:** Baijun Dong and Wei Xue, Department of Urology, Renji Hospital, School of Medicine, Shanghai Jiaotong University, Shanghai

200127, China. E-mail: dongbaijun@hotmail.com (BJD); uroxuewei@163.com (WX); Chen Yang, Fudan Institute of Urology, Huashan Hospital, Fudan University, Shanghai 200040, China. E-mail: YangC\_Huashan@163.com

# The relationship between circ-TRPS1 and prostatic cancer prognoses



**Figure 5.** Downregulation of miR-124-3p or overexpression of EZH2 reversed the inhibitory effect of si-circ-TRPS1 on PCa proliferation and migration. A-C. Colony formation assays showing the proliferation of PC3 and LnCaP cells. Data are means  $\pm$  SD; \*\*\* $P$  < 0.001 vs. NC. ### $P$  < 0.001 vs. si-circ-TRPS1. D-F. Cell migration was assessed in PC3 and LnCaP cells using Transwell assays. Data are means  $\pm$  SD; \*\*\* $P$  < 0.001 vs. NC. ### $P$  < 0.001 vs. si-circ-TRPS1. G-I. Images of tumor sphere formation assays in PC3 and LnCaP cells (200 cells/well); scale bar, 100  $\mu$ m. Data are means  $\pm$  SD; \*\*\* $P$  < 0.001 vs. NC. ### $P$  < 0.001 vs. si-circ-TRPS1. J, K. Western blots for the expression of stemness markers OCT4 and Nanog in PC3 and LnCaP cells.