

Erratum

Long non-coding RNA LINC00673 promotes breast cancer proliferation and metastasis through regulating B7-H6 and epithelial-mesenchymal transition: Am J Cancer Res. 2018; 8(7): 1273-1287

Erjie Xia*, Yanyan Shen*, Adheesh Bhandari, Xiaofen Zhou, Yinghao Wang, Fan Yang, Ouchen Wang

*Department of Thyroid and Breast Surgery, The First Affiliated Hospital of Wenzhou Medical University Wenzhou, Zhejiang, People's Republic of China. *Equal contributors.*

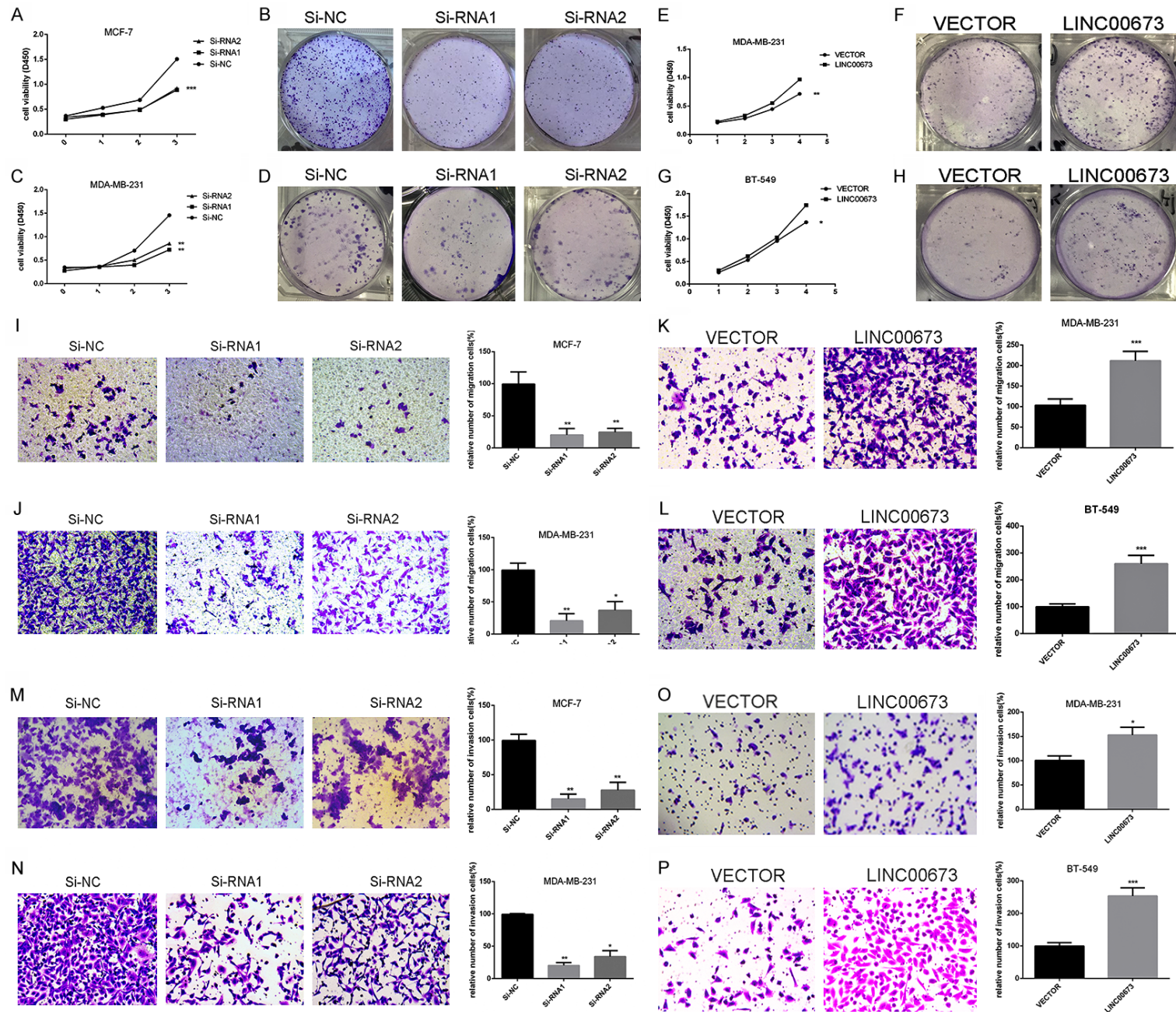
Received December 13, 2021; Accepted January 13, 2022; Epub February 15, 2022; Published February 28, 2022

In this article, we found that there is a small mistake in **Figure 20**. We hereby have submitted the corrected version of the **Figure 2**. The authors express regrets for this mistake.

The First Affiliated Hospital of Wenzhou Medical University Wenzhou, Zhejiang, People's Republic of China. E-mail: fanyang_ne@126.com (FY); woc863@hotmail.com (OCW)

Address correspondence to: Fan Yang and Ouchen Wang, Department of Thyroid and Breast Surgery,

LINC00673 is a gene associated with breast cancer



LINC00673 is a gene associated with breast cancer

Figure 2. Dysregulation LINC00673 gene expression in PTC cells inhibiting proliferation and metastasis. A, C. MCF-7 and MDA-MB-231 cell lines transfected with Si-RNA or Si-NC were cultured in 96-well plates for 1-4 days and using CCK-8 measured cell proliferation. Cell proliferation was significantly suppressed in breast cancer cell transfected by Si-RNA. E, G. MDA-MB-231 and BT-549 cell lines transfected with LINC00673 or Vector were cultured in 96-well plates for 1-4 days and using CCK-8 measured cell proliferation. Cell proliferation was significantly enhanced in breast cancer cell transfected by Si-RNA. B, D. MCF-7 and MDA-MB-231 cell lines transfected with Si-RNA or Si-NC were cultured in 6-well plates for 10-14 days. F, H. MDA-MB-231 and BT-549 cell lines transfected with LINC00673 or Vector were cultured in 6-well plates for 10-14 days. I, J. In MCF-7 and MDA-MB-231, transwell migration assays in down-regulation LINC00673 cells and their corresponding control cells. K, L. In MDA-MB-231 and BT-549, transwell migration assays in up-regulation LINC00673 cells and their corresponding control cells. M, N. In MCF-7 and MDA-MB-231, transwell invasion assays in down-regulation LINC00673 cells and their corresponding control cells. O, P. In MDA-MB-231 and BT-549, transwell invasion assays in up-regulation LINC00673 cells and their corresponding control cells. The columns represented the mean number from at least three independent experiments, and the little vertical bars on the top of the columns represent SD. * $P < 0.05$, ** $P < 0.01$ and *** $P < 0.001$ in comparison with Si-NC or si-LINC00673 and LINC00673 or Vector using student's t-test.