

Erratum

Monepantel considerably enhances the therapeutic potentials of PEGylated liposomal doxorubicin and gemcitabine in ovarian cancer: in vitro and in vivo studies: Am J Cancer Res. 2018; 8(10): 2064-2075

Parvin Ataie-Kachoie, Krishna Pillai, Samina Badar, Javed Akhter, David Lawson Morris

Department of Surgery, University of New South Wales, St. George Hospital, Kogarah, NSW, Australia

Received January 29, 2025; Accepted February 8, 2025; Epub February 15, 2025; Published February 28, 2025

Two typos have been found in text. The correct contents are shown below.

1. Page 2068, right column, 1st paragraph after the title - line number 24: $40 \pm 3\%$ needs to be changed to $75.67\% \pm 3\%$ as follows “Combining MPL resulted in $35 \pm 4\%$ and $75.67 \pm 3\%$ decrease in the number of A2780 and OVCAR-3 colonies recovering from doxorubicin ($P < 0.001$)”.

2. Page 2072, right column, 1st paragraph, 1st line: 40% should be changed to 75.67% as follows “MPL with PLD resulted in 35% and 75.67% colony reduction in A2780 and OVCAR-3 cells, respectively”.

In addition, an error has been found that there was a repetition of a photo in **Figure 2**. Therefore, we provide the correct version to displace the wrong figures and reflect changes. We sincerely apologize for our oversight and any confusion it may have caused. The corrected **Figure 2** is shown below.

Address correspondence to: Dr. Krishna Pillai, Department of Surgery, University of New South Wales, St. George Hospital, Kogarah, NSW, Australia. Tel: +61-2-91132975; Fax: +61-2-91133997; E-mail: panthera6444@yahoo.com.au

Monepantel enhances cytotoxicity of doxorubicin and gemcitabine in ovarian cancer

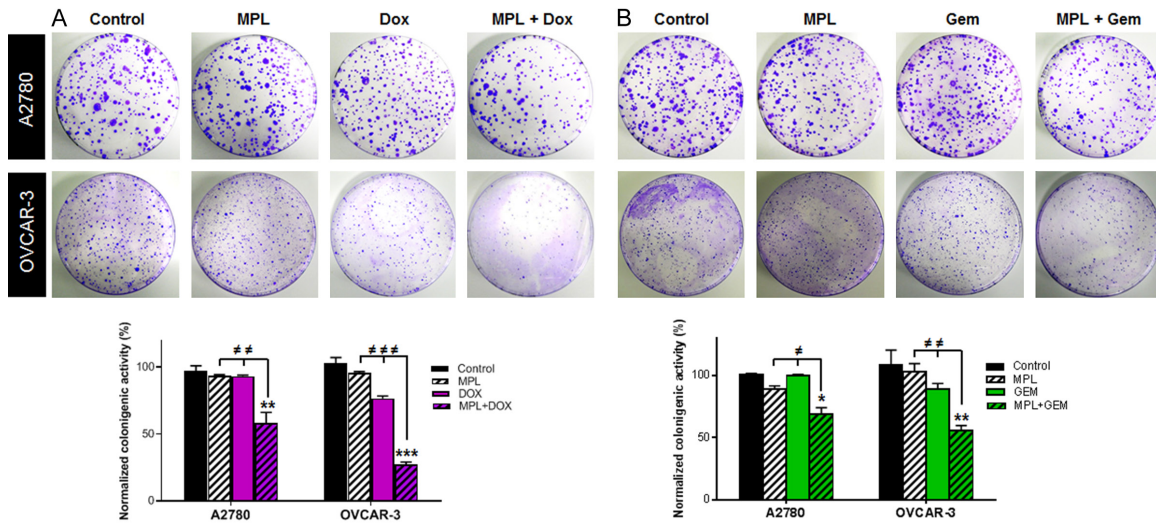


Figure 2. Co-treatment of MPL with doxorubicin/gemcitabine inhibits the formation of ovarian cancer cell colonies. A2780 and OVCAR-3 cells were seeded at a low density in the presence of MPL, either alone or together with (A) doxorubicin or (B) gemcitabine and were then analysed for the growth of resistant colonies from single cells. Cells were stained with crystal violet after 15 days. Colonies containing ≥ 50 cells were counted. Results are presented as a percentage of control colony formation (100%). * $P < 0.05$, ** $P < 0.01$ and *** $P < 0.001$ compared to control. # $P < 0.05$, ## $P < 0.01$ and ### $P < 0.001$ compared to MPL, doxorubicin or gemcitabine alone.