

Erratum

Induction of cells with prostate cancer stem-like properties from mouse induced pluripotent stem cells via conditioned medium: Am J Cancer Res. 2018; 8(8): 1624-1632

Naijin Xu^{1*}, Xiezhao Li^{2*}, Masami Watanabe^{1,3}, Hideo Ueki¹, Hao Hu⁴, Na Li⁴, Motoo Araki¹, Koichiro Wada¹, Abai Xu², Chunxiao Liu², Yasutomo Nasu^{1,3,5}, Peng Huang^{1,2,5}

¹Department of Urology, Okayama University Graduate School of Medicine, Dentistry and Pharmaceutical Sciences, Okayama, Japan; ²Department of Urology, Zhujiang Hospital, Southern Medical University, Guangzhou, China; ³Center for Innovative Clinical Medicine, Okayama University Hospital, Okayama, Japan; ⁴Guangzhou Institute of Pediatrics, Guangzhou Women and Children's Medical Center, Guangzhou, China; ⁵Okayama Medical Innovation Center, Okayama University, Okayama, Japan. *Equal contributors and co-first authors.

Received May 11, 2025; Accepted May 16, 2025; Epub May 25, 2025; Published May 30, 2025

In this article, mistakes have been found during assembly of paper and proof-checking in **Figure 4**. We are sorry for this mistake and apologize for any inconvenience caused. The corrected **Figure 4** is presented below.

School of Medicine, Dentistry and Pharmaceutical Sciences, Okayama, Japan. Tel: +81-86-235-7997; Fax: +81-86-235-7884; E-mail: huangpeng509@gmail.com

Address correspondence to: Peng Huang, Department of Urology, Okayama University Graduate

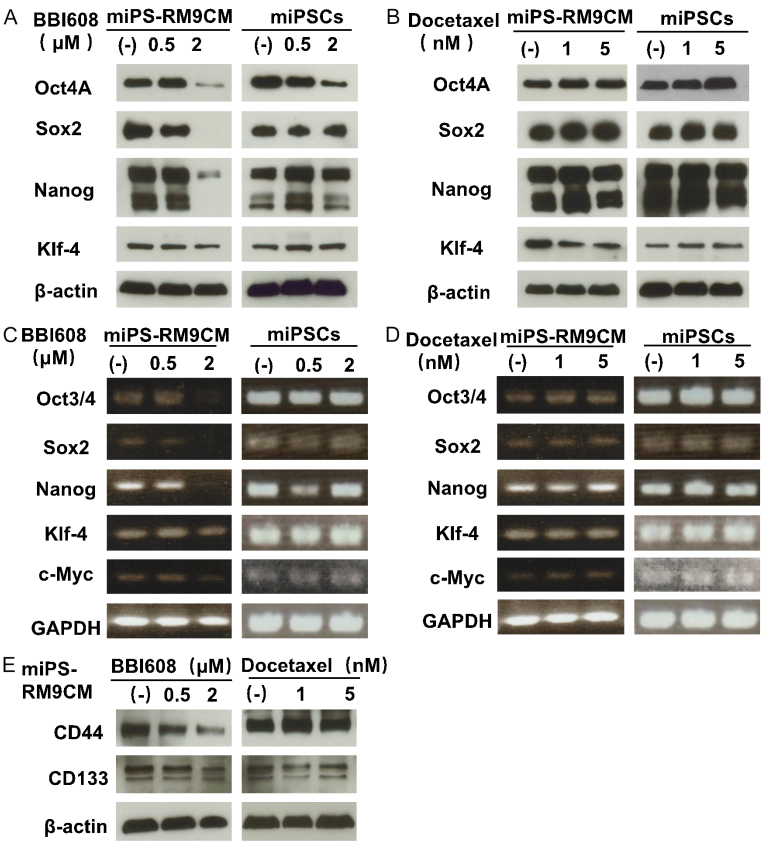


Figure 4. Protein and gene expression analysis of stemness factor and CSC surface marker in miPSCs and miPS-RM9CM cells treated with BBI608 and docetaxel. A and B. Western blot analysis of Oct4A, Sox2, Nanog and Klf-4 expression in miPSCs and miPS-RM9CM cells with BBI608 or docetaxel treatment for 24 h. C and D. RT-PCR analysis of Oct3/4, Sox2, Nanog and Klf-4 expression in miPSCs and miPS-RM9CM cells with BBI608 or docetaxel treatment for 24 h. GAPDH served as a loading control. E. The expression of CD133 and CD44 in miPS-RM9CM cells with BBI608 or docetaxel treatment for 24 h. β-actin was used as a loading control. Results are representative of three independent experiments.