

Erratum

Diffusion MRI biomarkers predict the outcome of irreversible electroporation in a pancreatic tumor mouse model: Am J Cancer Res. 2018; 8(8): 1615-1623

Matteo Figini¹, Xifu Wang^{1,2}, Tianchu Lyu¹, Zhanliang Su^{1,3}, Bin Wang^{1,4}, Chong Sun^{1,5}, Junjie Shangguan¹, Liang Pan¹, Kang Zhou¹, Quanhong Ma¹, Vahid Yaghmai^{1,6}, Daniele Procissi¹, Andrew C Larson^{1,6}, Zhuoli Zhang^{1,6}

¹Department of Radiology, Feinberg School of Medicine, Northwestern University, Chicago, IL, USA; ²Department of Radiology, Shanghai General Hospital, Shanghai Jiaotong University, Shanghai, The People's Republic of China; ³Department of Radiology, Tianjin Xiqing Hospital, Tianjin, The People's Republic of China; ⁴Department of General Surgery, Nanfang Hospital, Southern Medical University, Guangdong Provincial Engineering Technology Research Center of Minimally Invasive Surgery, Guangzhou, Guangdong, The People's Republic of China; ⁵Department of Orthopedics, Qilu Hospital, Shandong University, Jinan, Shandong, The People's Republic of China; ⁶Robert H. Lurie Comprehensive Cancer Center, Northwestern University, Chicago, IL, USA

Received June 2, 2025; Accepted June 3, 2025; Epub July 25, 2025; Published July 30, 2025

In the originally published **Figure 3**, an incorrect image was inadvertently used to represent Caspase 3 staining in untreated tumor on day 14. During revision, we replaced the Caspase 3 staining image for untreated tumors on day 1 and day 14. We now provide a revised version of **Figure 3**, which includes the corrected Caspase 3 panels for the untreated group at both time points. We would like to emphasize that this correction does not affect the interpretation, results, or scientific conclusions of the figure or the manuscript. We sincerely apologize for this oversight. The corrected **Figure 3** is shown below.

Address correspondence to: Dr. Zhuoli Zhang, Robert H. Lurie Comprehensive Cancer Center, Department of Radiology, Feinberg School of Medicine, Northwestern University, 737 N. Michigan Ave, 16th Floor, Chicago 60611, IL, USA. Tel: 312-926-3874; Fax: 312-926-5991; E-mail: zhuolizhang@northwestern.edu; Dr. Daniel Procissi, Department of Radiology, Feinberg School of Medicine, Northwestern University, Chicago, IL, USA. Tel: 312-503-2247; Fax: 312-926-5991; E-mail: d-procissi@northwestern.edu

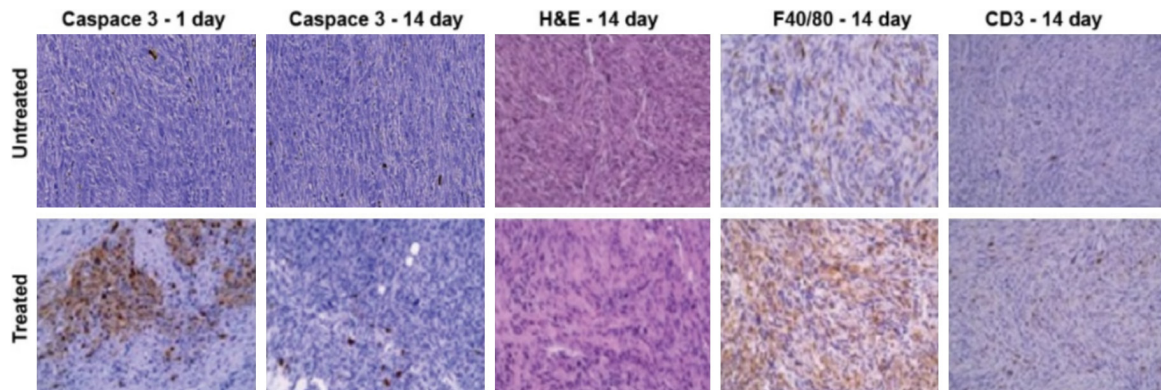


Figure 3. Representative histology sections. Sections corresponding to the untreated and treated lesions in the same mouse are shown in the first and second row respectively, whereas each column corresponds to a different staining (Caspase 3-1 and 14 days after IRE, H&E, F4/80 and CD3). Image magnification is 40 × for all panels. Extensive apoptosis is evident at 1 day and no more visible at 14 days in treated tumors; a lower number of tumor cells, as well as a higher number of macrophages and T cells, are present at 14 days in treated tumors.