

Erratum

The efficacy and mechanism of thoracic photodynamic therapy mediated by hematoporphyrin injection on disseminated pleural malignancies of Lewis lung carcinoma in mice: Am J Cancer Res. 2022; 12(4): 1502-1510

Wenjuan Pu^{1,2*}, Lei Xue^{1*}, Ziqi Han¹, Lei Yang¹, Yubao Wang³, Nansheng Wan¹, Jing Feng¹

¹Department of Respiratory and Critical Care Medicine, General Hospital of Tianjin Medical University, Tianjin 300052, China; ²Department of Respiratory and Critical Care Medicine, Tangdu Hospital, Air Force Military Medical University, Xi'an 710038, Shaanxi, China; ³Institute of Infectious Diseases, The Second Hospital of Tianjin Medical University, Tianjin 300211, China. *Equal contributors.

Received August 15, 2025; Accepted November 9, 2025; Epub January 25, 2026; Published January 30, 2026

In this article, we found an error in **Figure 6**. **Figure 6B** was inadvertently identical to **Figure 6A**. Therefore, we provide the correct version. We apologize for any inconvenience or confusion caused by the error. The corrected **Figure 6** is as follows.

Address correspondence to: Jing Feng and Nansheng Wan, Department of Respiratory and Critical Care Medicine, General Hospital of Tianjin Medical University, 154 Anshan Street, Tianjin 300052, China. E-mail: zyyhxfj@126.com (JF); wshzyy@163.com (NSW)

Intrathoracic PDT of disseminated pleural malignancies

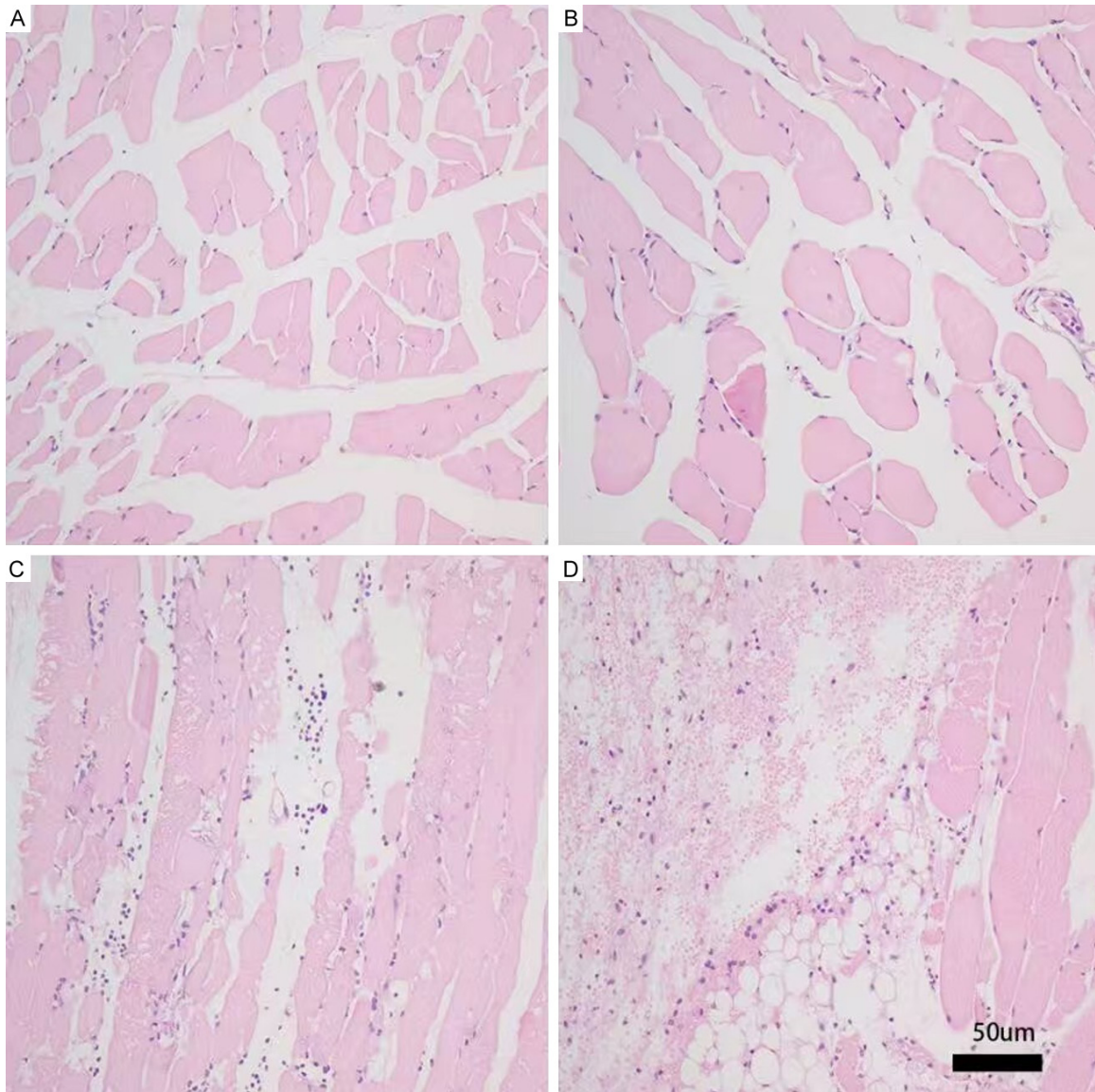


Figure 6. Histology of normal pleural tissues in each group under a microscope ($\times 200$). The nucleus was blue, and the cytoplasm was red. Compared with the model control group and pure laser irradiation group, the PDT low-dose group showed fractured fibrous tissue, a small amount of inflammatory cell infiltrated. The high-dose PDT group showed congested, bleeding blood vessels, and a large number of inflammatory cells infiltrated. A. Model control group. B. Pure laser irradiation group. C. PDT low dose group. D. PDT high dose group. Scalar bars: 50 μm .