

Erratum

Histone demethylase KDM4C activates HIF1 α /VEGFA signaling through the costimulatory factor STAT3 in NSCLC: Am J Cancer Res. 2020; 10(2): 491-506

Xiaowei Wu¹, Yu Deng¹, Yukun Zu¹, Jin Yin²

¹Department of Thoracic Surgery, Tongji Hospital, Tongji Medical Collage of Huazhong University of Science and Technology, Wuhan, Hubei, China; ²Department of Hematopathology, Tongji Hospital, Tongji Medical Collage of Huazhong University of Science and Technology, Wuhan, Hubei, China

Received February 9, 2026; Accepted March 11, 2026; Epub March 25, 2026; Published March 30, 2026

In checking our original data, we found an error appeared in H460 cell lines of **Figure 3F**. We apologize for the error and any inconvenience caused. This correction has no influence on the findings and conclusions of the research. The corrected **Figure 3** is shown below.

Address correspondence to: Dr. Jin Yin, Department of Hematopathology, Tongji Hospital, Tongji Medical Collage of Huazhong University of Science and Technology, Wuhan, Hubei, China. Tel: +86-027-6363-9716; E-mail: evita3482@qq.com

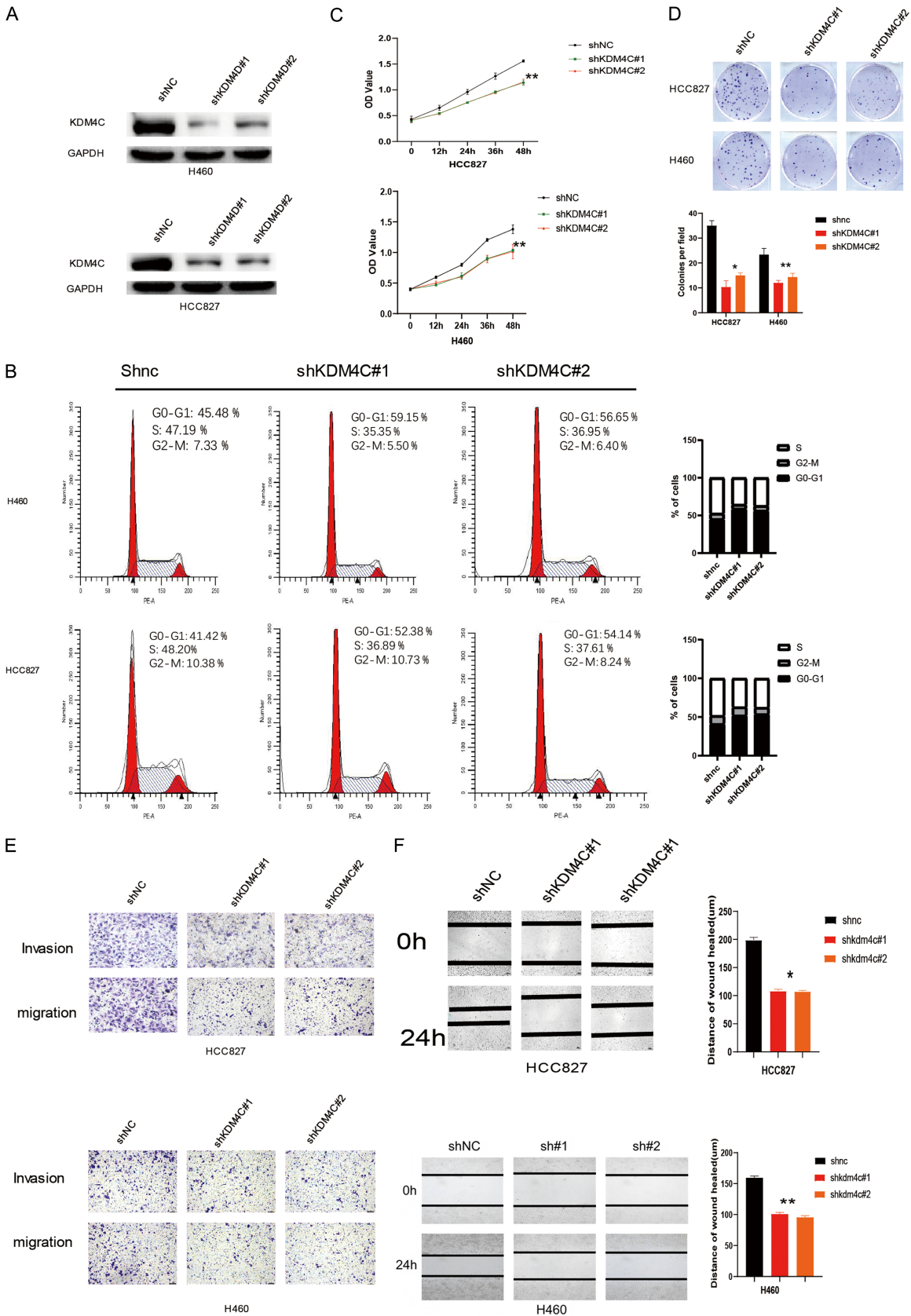


Figure 3. KDM4C knockdown inhibits cell proliferation, migration and invasion of NSCLC cells. A. H460 and HCC827 cells were transfected with shnc and shKDM4C virus and KDM4C protein levels measured by western blot analysis.

Oncologist

B. Cell cycle distribution was analyzed by flow cytometry in shKDM4C HCC827 and H460 cells. C. The viability of HCC827 and H460 cells stably expressing shnc and shKDM4C was analyzed by CCK8 assay. D. A colony formation assay was carried out using HCC827 and H460 cells stably expressing shnc and shKDM4C. E, F. The migration ability HCC827 and H460 cells stably expressing shnc and shKDM4C was analyzed by Transwell assay and the wound healing assay. *, $p < 0.01$; **, $p < 0.01$.