

## Erratum

# SLFN5 influences proliferation and apoptosis by upregulating PTEN transcription via ZEB1 and inhibits the purine metabolic pathway in breast cancer: Am J Cancer Res. 2020; 10(9): 2832-2850

Xuefeng Gu<sup>1,2,3\*</sup>, Guoqing Wan<sup>1,2,3\*</sup>, Yue Yang<sup>4\*</sup>, Yihao Liu<sup>5,6</sup>, Xintong Yang<sup>2</sup>, Yanjun Zheng<sup>1</sup>, Liying Jiang<sup>2</sup>, Peng Zhang<sup>7</sup>, Dingsheng Liu<sup>1</sup>, Weiming Zhao<sup>8</sup>, Gang Huang<sup>2</sup>, Changlian Lu<sup>2</sup>

<sup>1</sup>Shanghai University of Medicine & Health Science Affiliated Zhoupu Hospital, Shanghai, P. R. China; <sup>2</sup>Shanghai Key Laboratory of Molecular Imaging, Shanghai University of Medicine & Health Sciences, Shanghai, P. R. China; <sup>3</sup>School of Pharmacy, Shanghai University of Medicine & Health Sciences, Shanghai, P. R. China; <sup>4</sup>Department of Pathology, Mudanjiang Medical University, Mudanjiang, Heilongjiang, P. R. China; <sup>5</sup>NHC Key Laboratory of Human Disease Comparative Medicine, Institute of Laboratory Animal Sciences, CAMS&PUMC, Beijing, P. R. China; <sup>6</sup>Beijing Engineering Research Center for Experimental Animal Models of Human Critical Diseases, Beijing, P. R. China; <sup>7</sup>School of Clinical Medicine, Shanghai University of Medicine & Health Sciences, Shanghai, P. R. China; <sup>8</sup>Qiqihar Medical University, Qiqihar, Heilongjiang, P. R. China. \*Equal contributors.

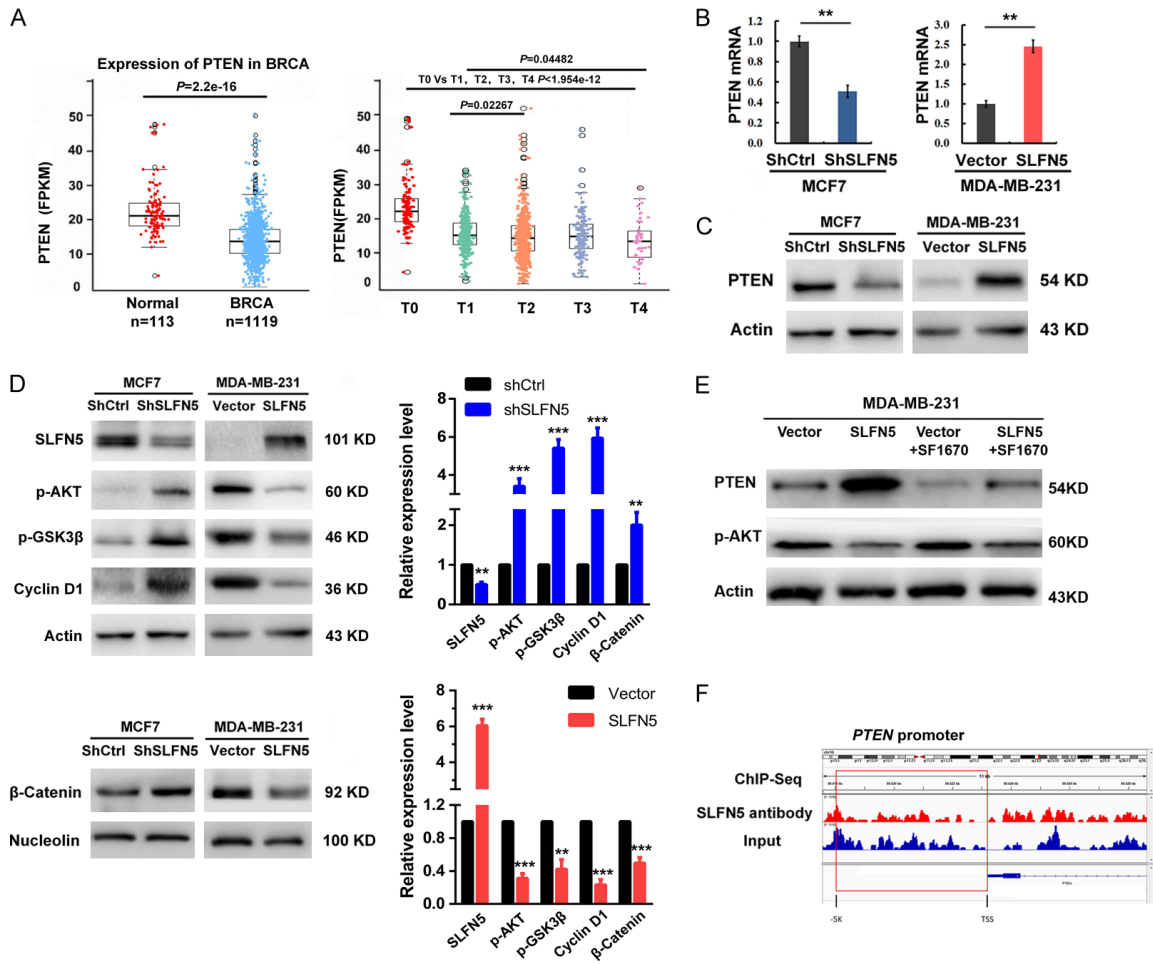
Received February 9, 2026; Accepted March 11, 2026; Epub April 25, 2026; Published April 30, 2026

In this paper, **Figure 4D** contains an incorrect image due to an unintentional mistake during the figure preparation and submission process. Therefore, we provide the correct version to displace the wrong figure. We sincerely apologize for this oversight and any confusion it may have caused. The corrected **Figure 4** is shown below.

**Address correspondence to:** Changlian Lu and Gang Huang, Shanghai Key Laboratory of Molecular Imaging, Shanghai University of Medicine &

Health Sciences, Shanghai 201318, P. R. China.  
Tel: +86-21-65883218; Fax: +86-21-65883218;  
E-mail: lvcl@sumhs.edu.cn (CLL); huangg@sumhs.edu.cn (GH); Weiming Zhao, Qiqihar Medical University, Qiqihar 161006, Heilongjiang, P. R. China.  
Tel: +86-452-2663311; Fax: +86-452-2663311;  
E-mail: zhaowm1969@126.com

# SLFN5 inhibits the progression of breast cancer



**Figure 4.** SLFN5 regulates the PTEN/AKT/cyclin D1 signalling cascades via ZEB1. **A.** TCGA analysis of PTEN expression in BRCA. **B.** The mRNA levels of PTEN in MCF-7 and MDA-MB-231 cells when SLFN5 was knocked down or overexpressed. **C.** The protein levels of PTEN in MCF-7 and MDA-MB-231 cells when SLFN5 was knocked down or overexpressed. **D.** Western blot analysis was used to determine the effect of SLFN5 knockdown or overexpression on proteins involved in the AKT signalling cascade in MCF-7 or MDA-MB-231 cells. **E.** Effect of SF1670 (2.0  $\mu$ M) on MDA-MB-231 cells overexpressing SLFN5. **F.** The combination of SLFN5 and the PTEN promoter detected by ChIP-Seq. \* $P < 0.05$ , \*\* $P < 0.01$ , \*\*\* $P < 0.001$ .