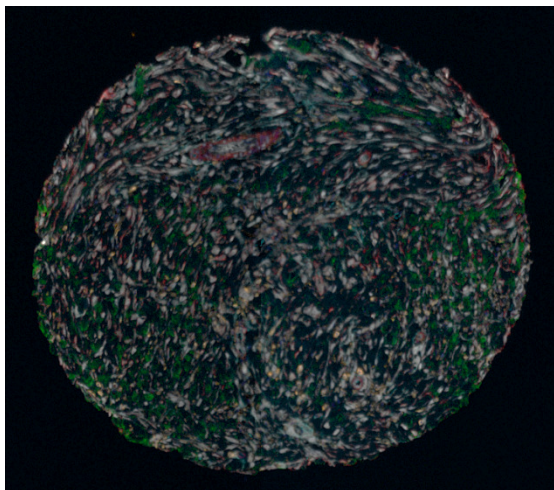
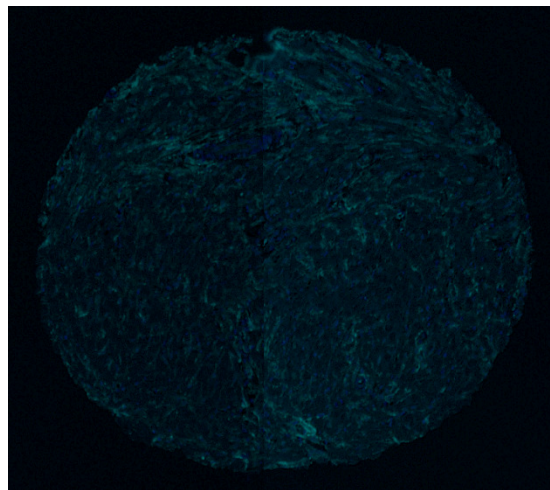


Supplemental data. Seven cores selected for algorithm training.
The scores for each marker represent the manual readings.

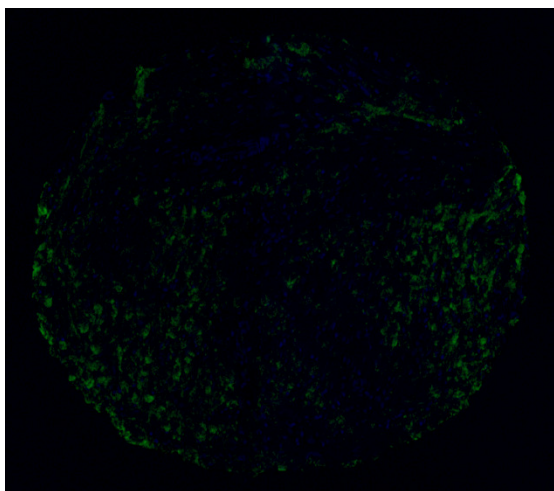
Training Core 1 (10x): High TNC & FAP expression
Multiplex composite



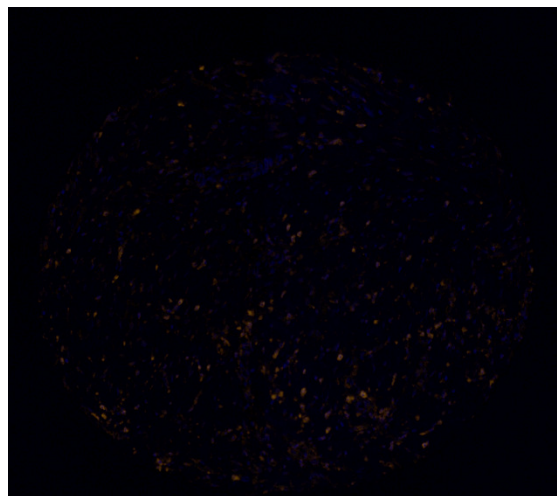
TNC: $\geq 50\%$



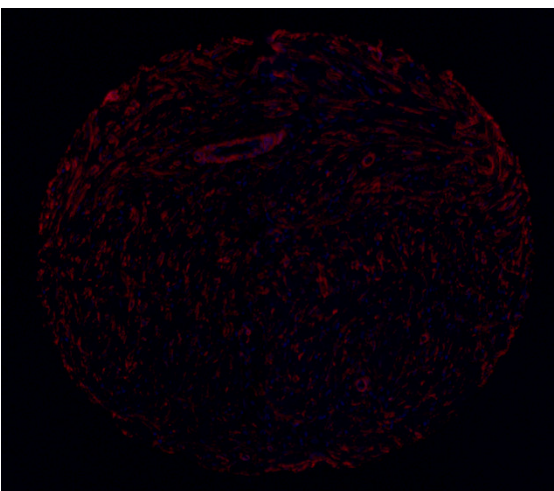
FAP: $\geq 50\%$



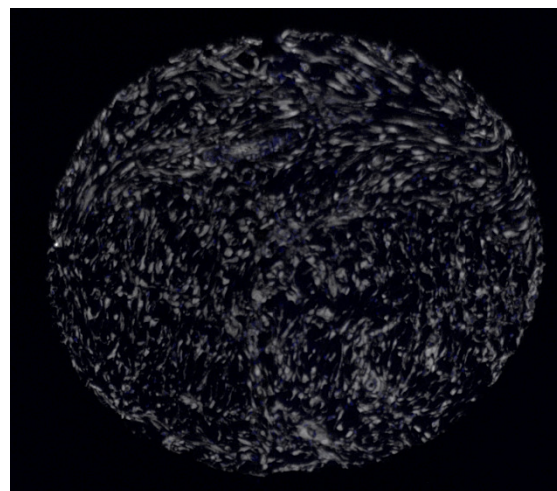
α SMA: $\geq 50\%$



MMP14: 25% to $<50\%$

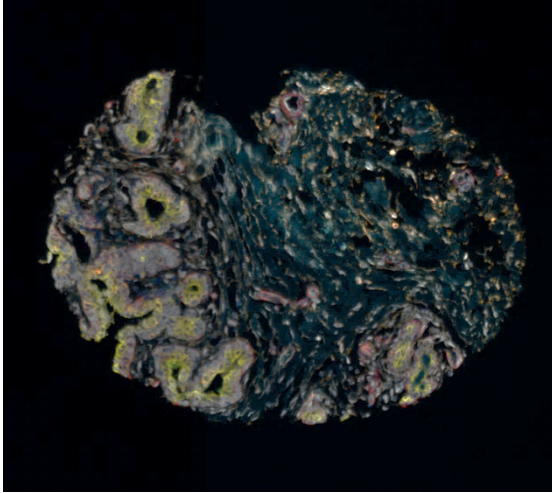


s100a6(PRS): $\geq 50\%$

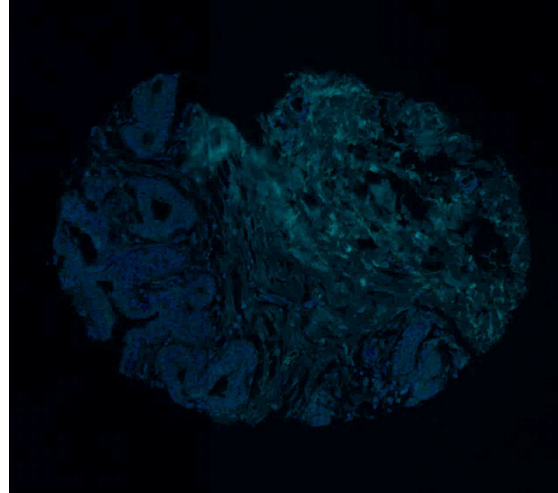


Training Core 2 (10x): High MMP14 expression

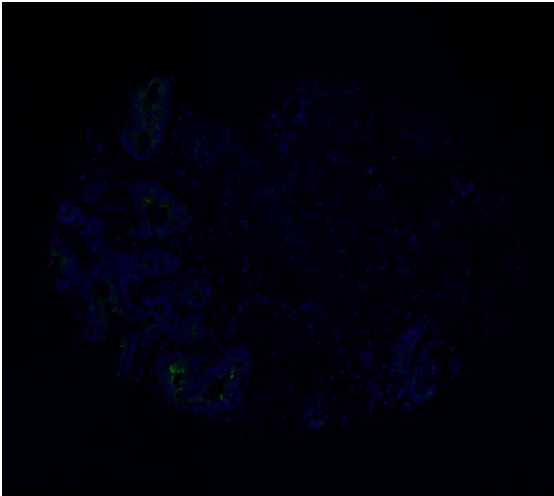
Multiplex composite



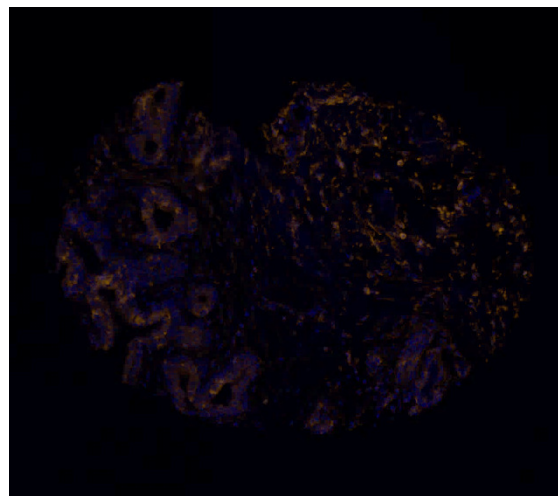
FAP: 25% to <50%



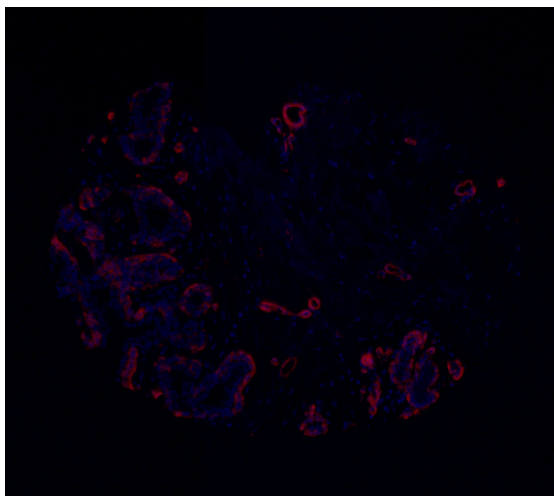
TNC: 0 to <1%



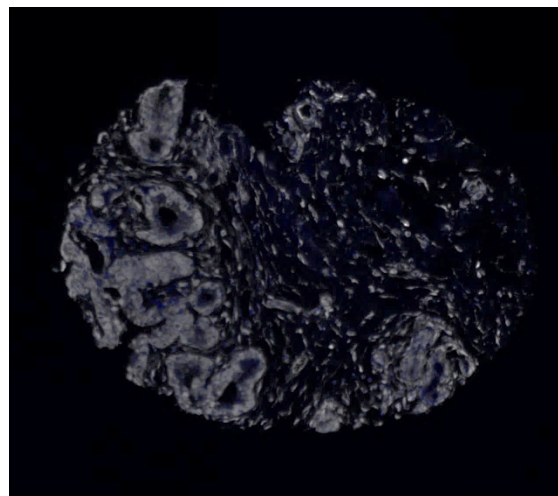
MMP14: 25% to <50%



α SMA: 1% to <10%

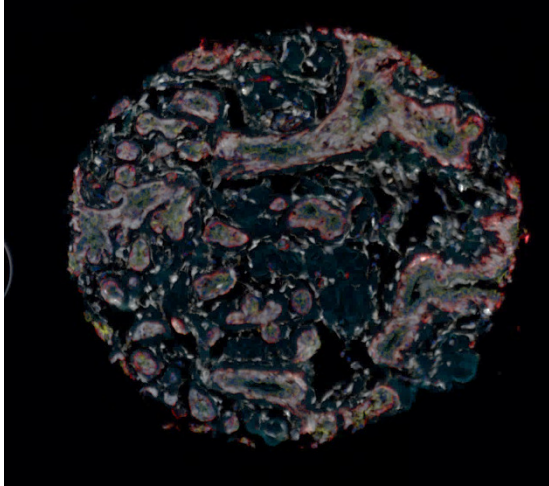


s100a6(PRS): 25% to <50%

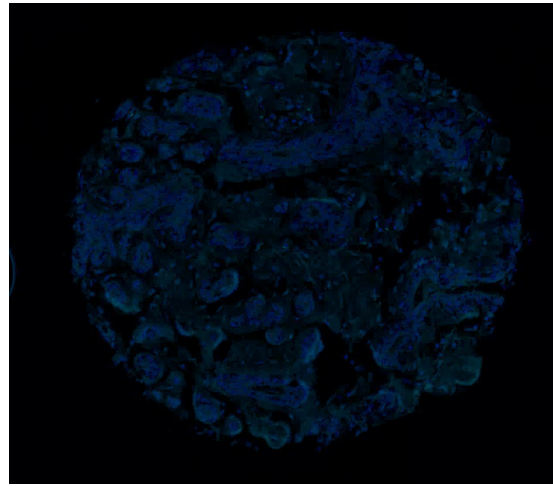


Training Core 3 (10x): High S1006A expression

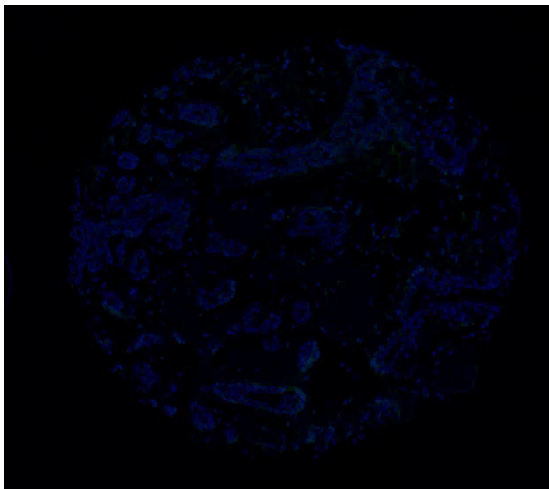
Multiplex composite



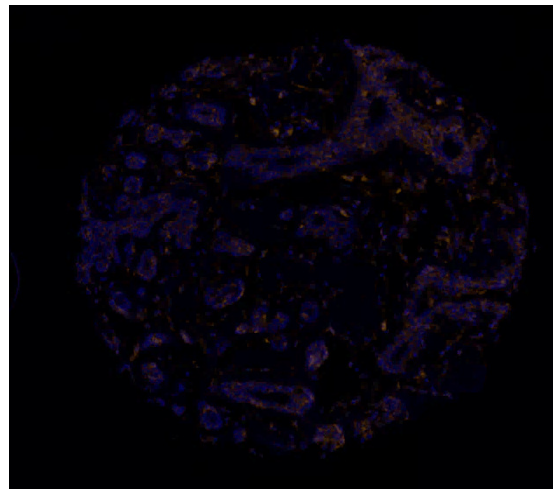
FAP: 10% to <25%



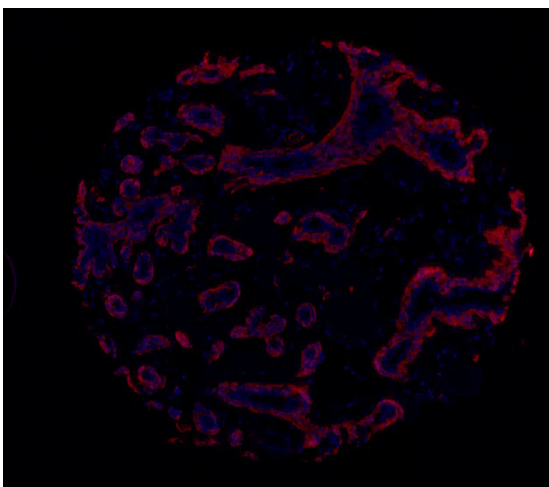
TNC: 0 to <1%



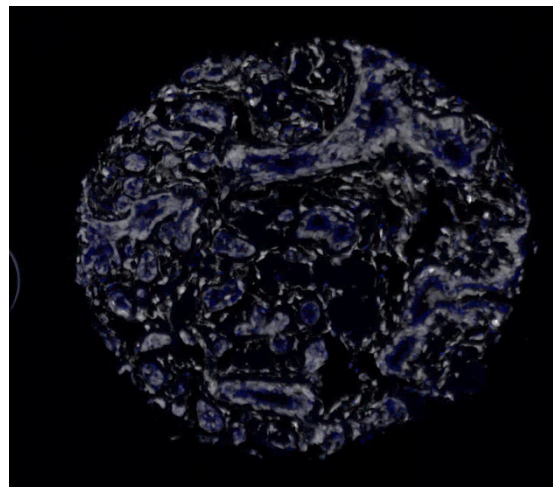
MMP14: 25% to <50%



α SMA: 10% to <25%

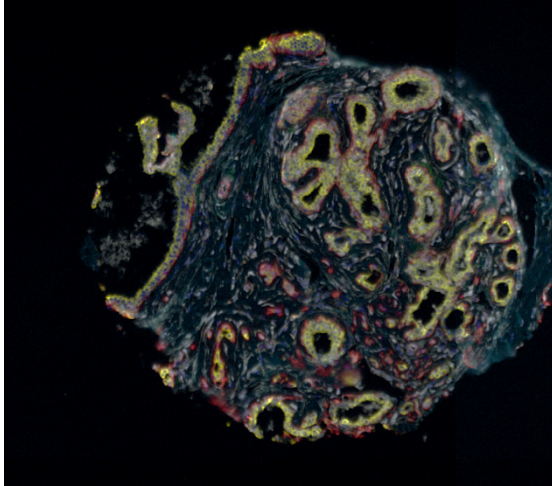


s100a6(PRS): \geq 50%

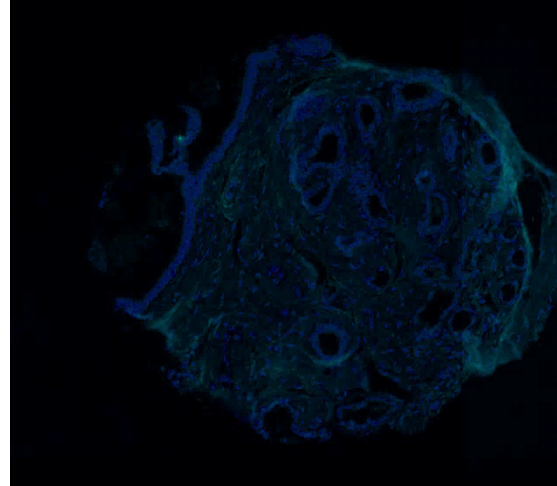


Training Core 4 (10x): High α -SMA expression

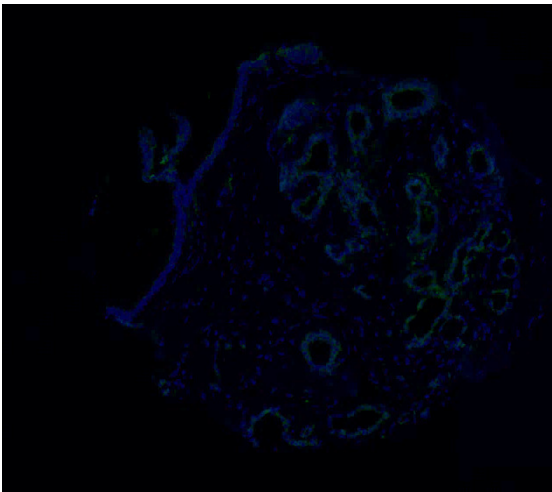
Multiplex composite



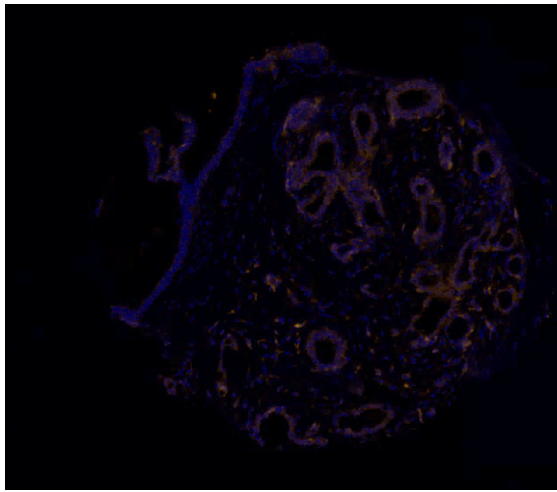
FAP: 10% to <25%



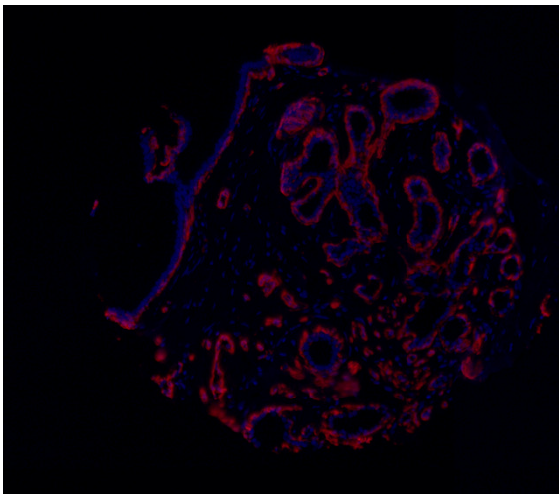
TNC: 0 to <1%



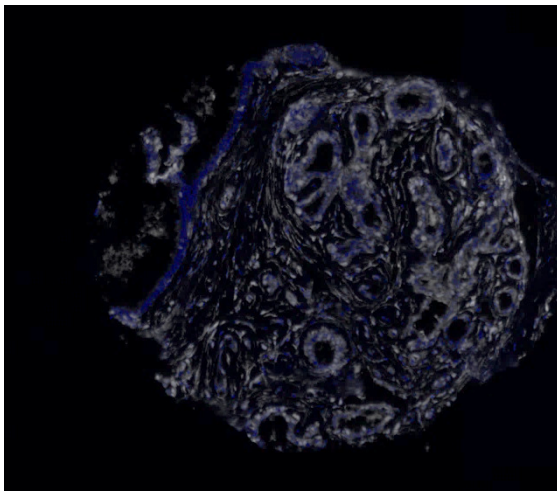
MMP14: 25% to <50%



α SMA: 25% to <50%

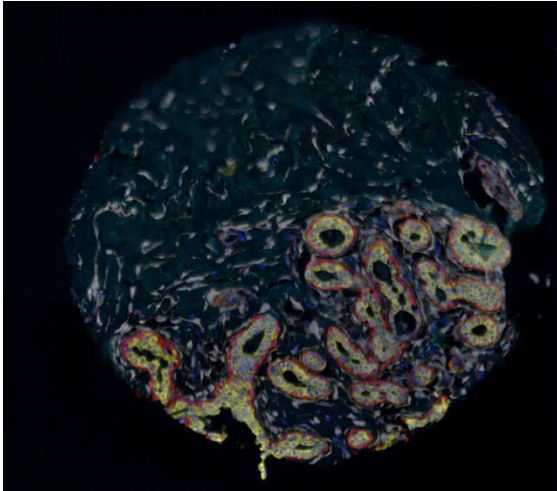


s100a6(PRS): 25% to <50%

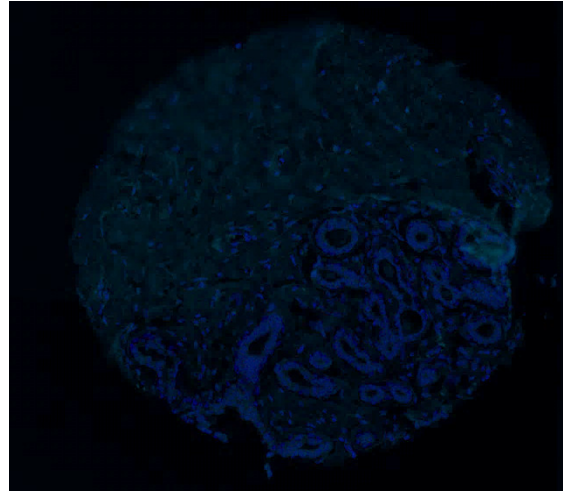


Training Core 5 (10x): Interstitial stroma

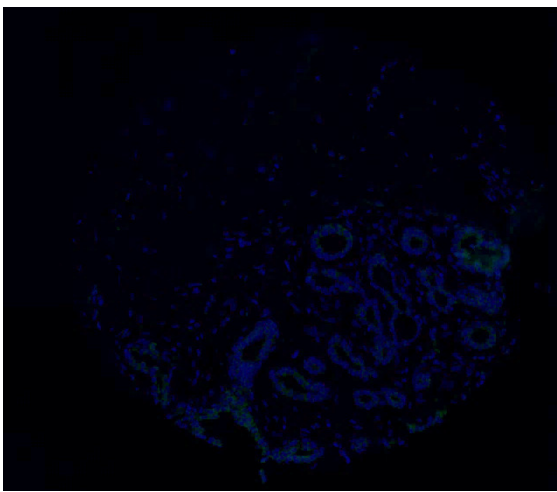
Multiplex composite



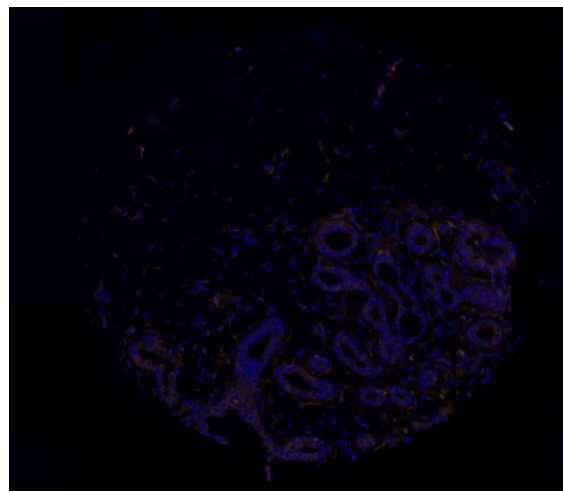
FAP: 0 to <1%



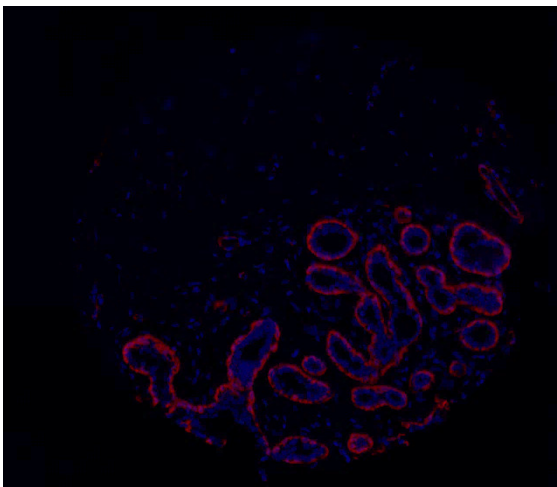
TNC: 0 to <1%



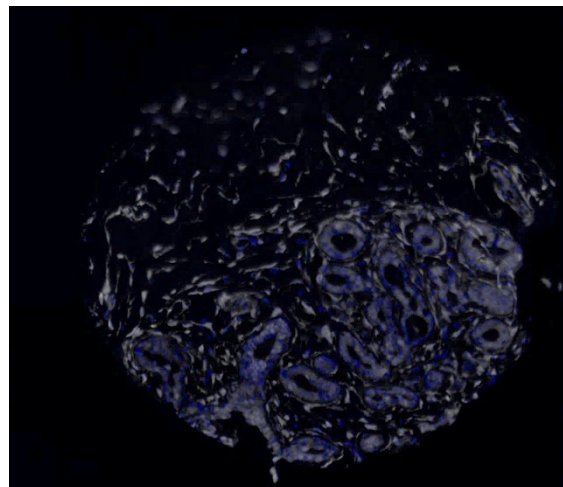
MMP14: 1% to <10%



α SMA: 1% to <10%

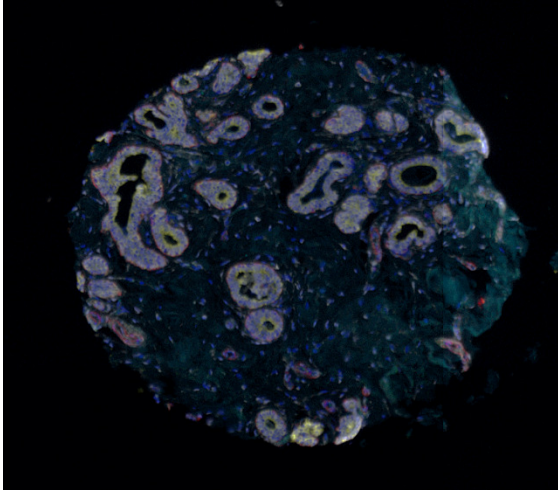


s100a6(PRS): 25% to <50%

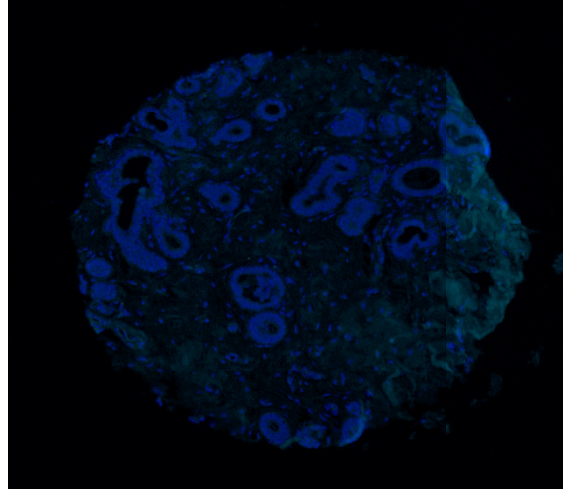


Training Core 6 (10x): Markers were low expressing.

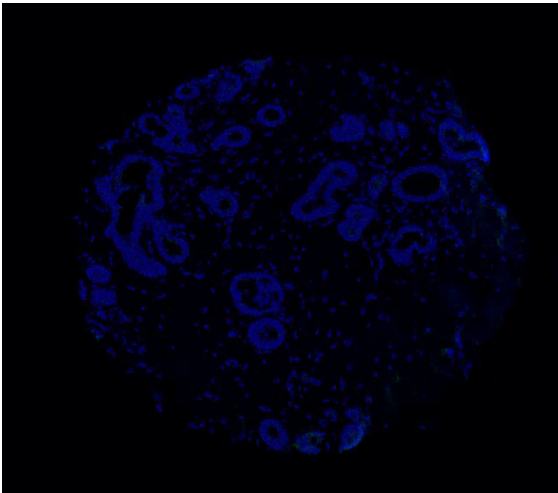
Multiplex composite



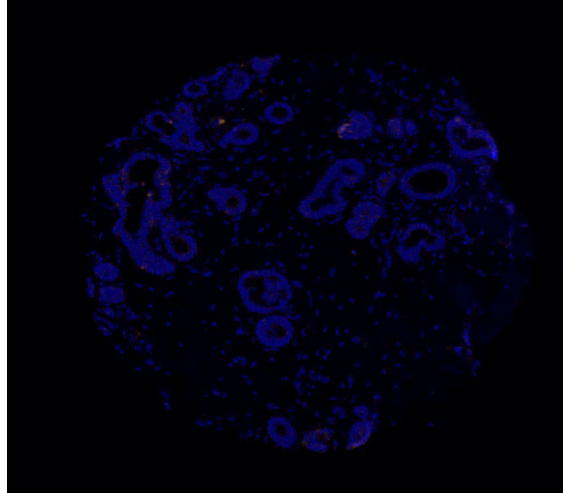
FAP: 10% to <25%



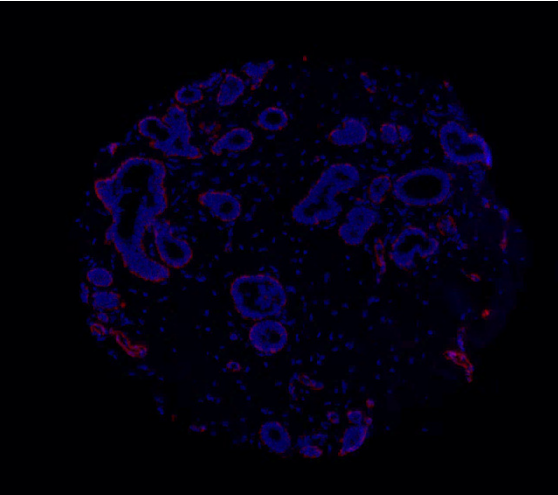
TNC: 0 to <1%



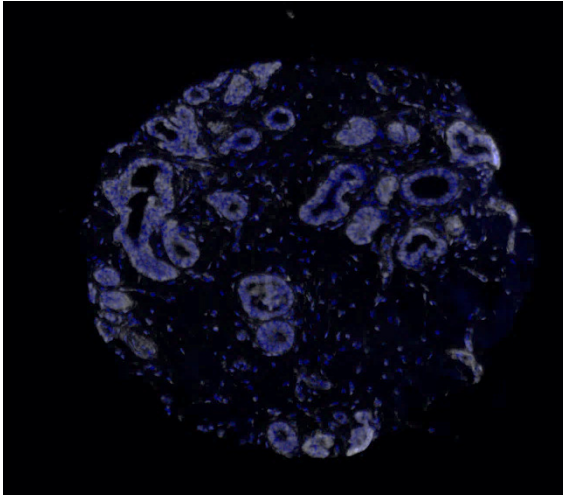
MMP14: 0 to <1%



α SMA: 1% to <10%

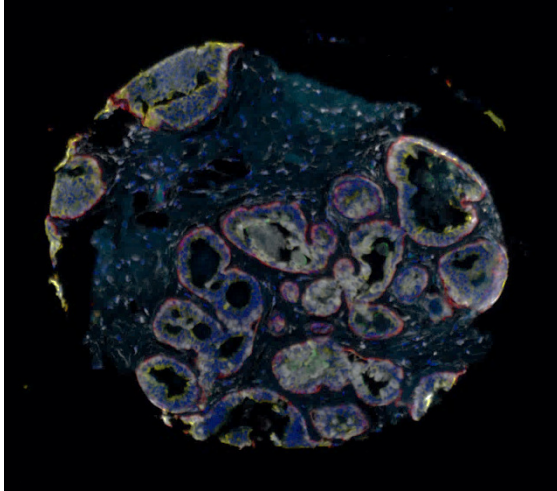


s100a6(PRS): 1% to <10%

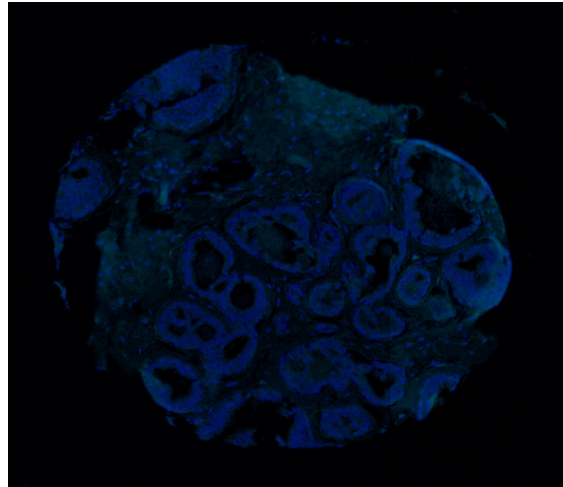


Training Core 7 (10x): Intact core

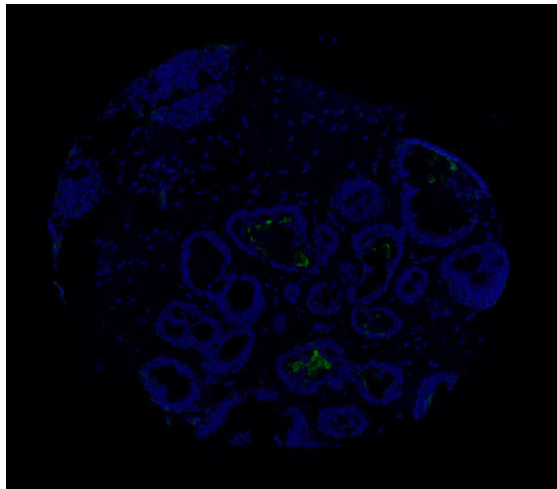
Multiplex composite



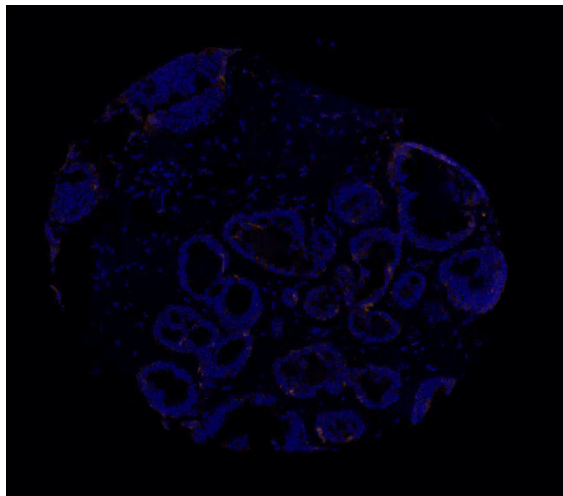
FAP: 1% to <10%



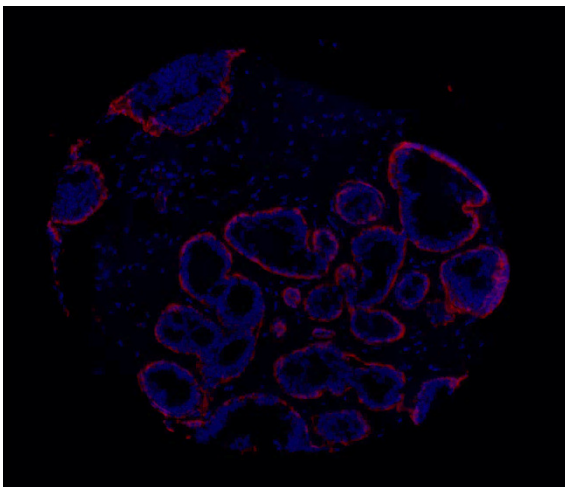
TNC: 0 to <1%



MMP14: 1% to <10%



α SMA: 1% to <10%



s100a6(PRS): 10% to <25%

