

Erratum

Evaluation of the clinicopathologic features of diffuse large B cell lymphoma after CD19-targeted CAR T-cell therapy emphasizing the potential diagnostic pitfalls: Am J Transl Res. 2020; 12(10): 6751-6762

Jun Zhou^{1*}, Wenjing Zhang^{1*}, Yanping Zhang^{2*}, Saifang Zheng¹, Luting Zhou¹, Xiaoqun Yang¹, Chaofu Wang¹

¹Department of Pathology, Ruijin Hospital, Shanghai Jiaotong University School of Medicine, Shanghai, China;

²Department of Pathology, The First Affiliated Hospital of Zhengzhou University, Zhengzhou, Henan, China. *Equal contributors.

Received March 21, 2021; Accepted November 9, 2021; Epub January 15, 2022; Published January 30, 2022

In this paper, we need to correct a few mistakes. In the published version of **Figure 3**, the labels of purple and green curves had been reversed (the purple one represented Group II, and the green one represented Group I). Also, on page 6759, the 7th line from the bottom in the second passage, the word “better” in the sentence “However, the Kaplan-Meier analysis showed that the DFS of Group I was significantly better than that of Group II” should be changed to “worse”. Thus, we to published this Erratum to reflect these changes. The authors express regret for the mistakes.

Address correspondence to: Drs. Chaofu Wang and Jun Zhou, Department of Pathology, Ruijin Hospital, Shanghai Jiaotong University School of Medicine, No. 197, 2nd Ruijin Road, Huangpu District, Shanghai, China. Tel: +86-17321086332; E-mail: wangchaofu@126.com (CFW); Tel: +86-188169-35865; E-mail: zhoujun2006305@126.com (JZ)

DLBCL after CAR T-cell therapy

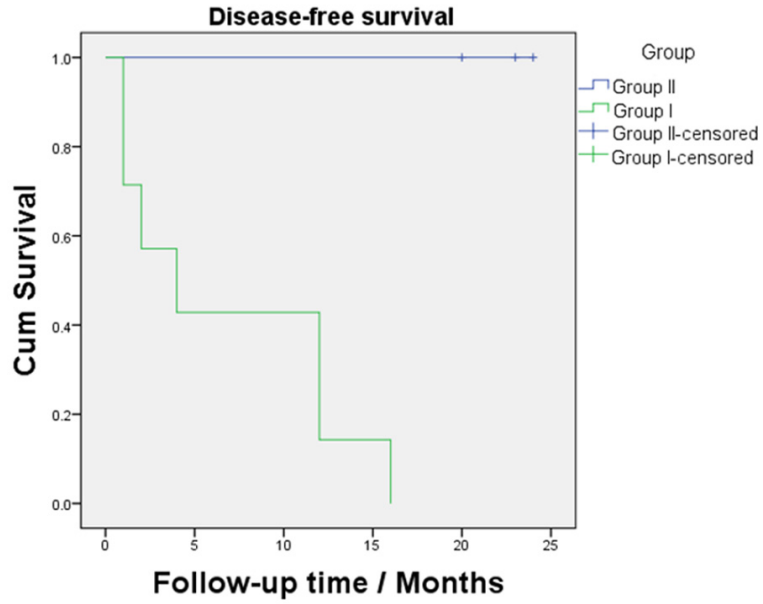


Figure 3. Kaplan-Meier curve showing that the DFS of Group II was significantly better than that of Group I (log-rank, $P=0.009$). Group I: patients with any histologic types eventually growing into types I or II until the end of the follow-up; Group II, patients with any histologic types eventually growing into any of types III-V until the end of the follow-up.