

## *Erratum*

# **A comparative study of the differences in the imaging characteristics of pulmonary tuberculosis patients with different ages and courses: Int J Clin Exp Med. 2021; 14(1): 452-462**

Mubin Cai\*, Wencai Tang\*, Chuanzi Li, Zhongshi Nie, Weijin Xing

*Department of Radiology, The Second Affiliated Hospital of Hainan Medical University, Haikou 570311, Hainan Province, China. \*Equal contributors and co-first authors.*

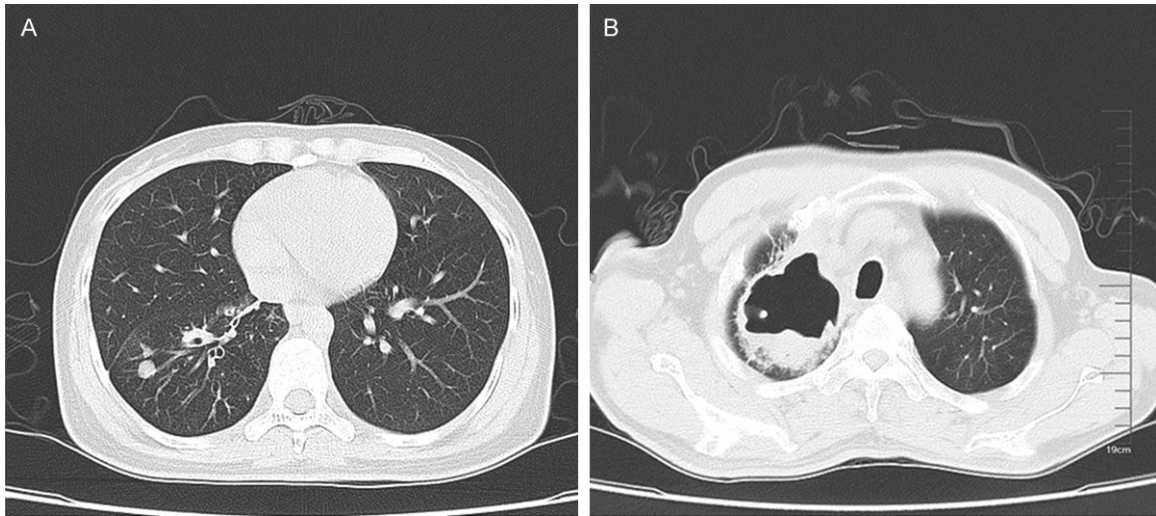
Received February 5, 2021; Accepted February 8, 2021; Epub February 15, 2022; Published February 28, 2022

In this article published in Int J Clin Exp Med, we apologize for a mistake found in **Figure 1**. We are hereby correcting the error in **Figure 1**. The following published figure is corrected as **Figure 1**.

Hainan Medical University, No. 48 Baishuitang Road, Longhua District, Haikou 570311, Hainan Province, China. Tel: +86-0898-65399087; Fax: +86-0898-65399087; E-mail: hn5wht@163.com

**Address correspondence to:** Weijin Xing, Department of Radiology, The Second Affiliated Hospital of

## Different imaging characteristics in pulmonary tuberculosis patients



**Figure 1.** Comparison of the imaging characteristics of PTB patients of different ages. A. In the young group, the cavities, the high-density shadows of consistency on one side, and the liquid plane in the cavity are not significant. B. In the elderly group, the cavities, the high-density shadows of consistency on one side, and the liquid plane in the cavity are remarkable.