

## Erratum

# Application of the traditional Chinese medicine XinMaiJia to the treatment of atherosclerosis in rats: Int J Clin Exp Med. 2016; 9(7): 14897-14906

Guo-Pin Pan<sup>1\*</sup>, Ya-Ling Yin<sup>2\*</sup>, Chong Zhang<sup>1</sup>, Rui-Li Sun<sup>3</sup>, Zhi-Gang Guo<sup>2</sup>, Yan-Long Jia<sup>1</sup>, Mo-Li Zhu<sup>1</sup>, Fan-Rong Zhao<sup>1</sup>, Guang-Rui Wan<sup>1</sup>, Peng Li<sup>1</sup>

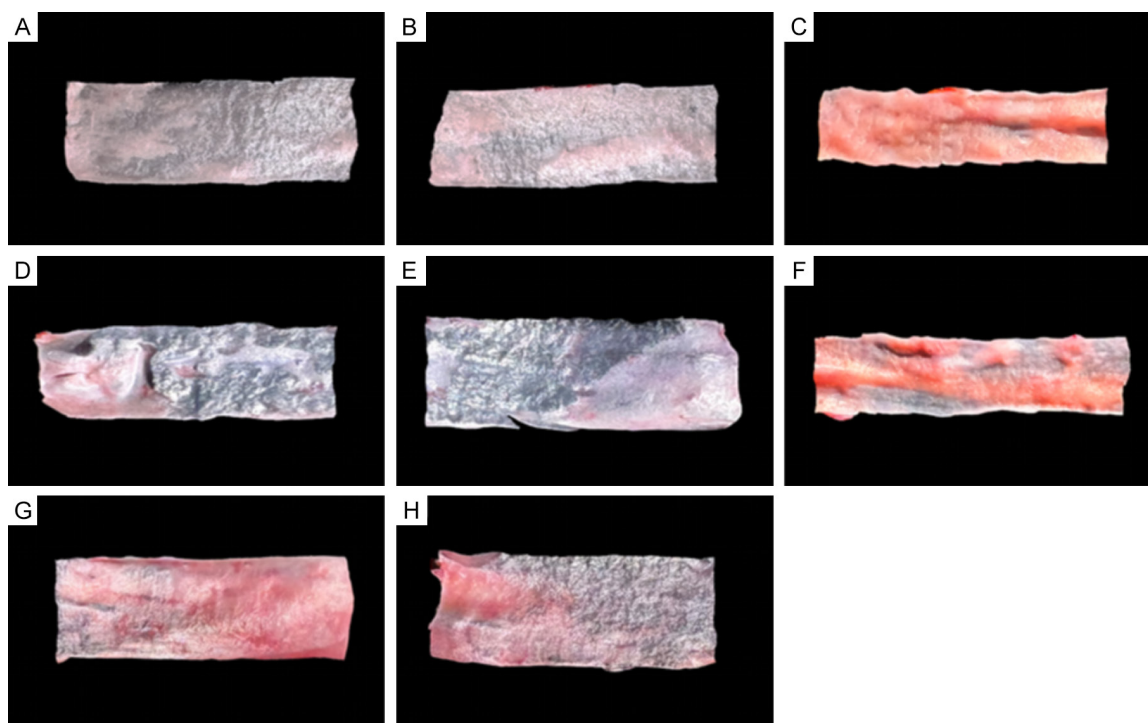
<sup>1</sup>College of Pharmacy, Xinxiang Medical University, Xinxiang 453003, Henan, China; <sup>2</sup>School of Basic Medical Sciences, Xinxiang Medical University, Xinxiang 453003, Henan, China; <sup>3</sup>Department of Laboratory Medicine, Research Center for Immunology, Xinxiang Medical University, Xinxiang 453003, Henan, China. \*Equal contributors.

Received June 19, 2025; Accepted November 6, 2025; Epub December 15, 2025; Published December 30, 2025

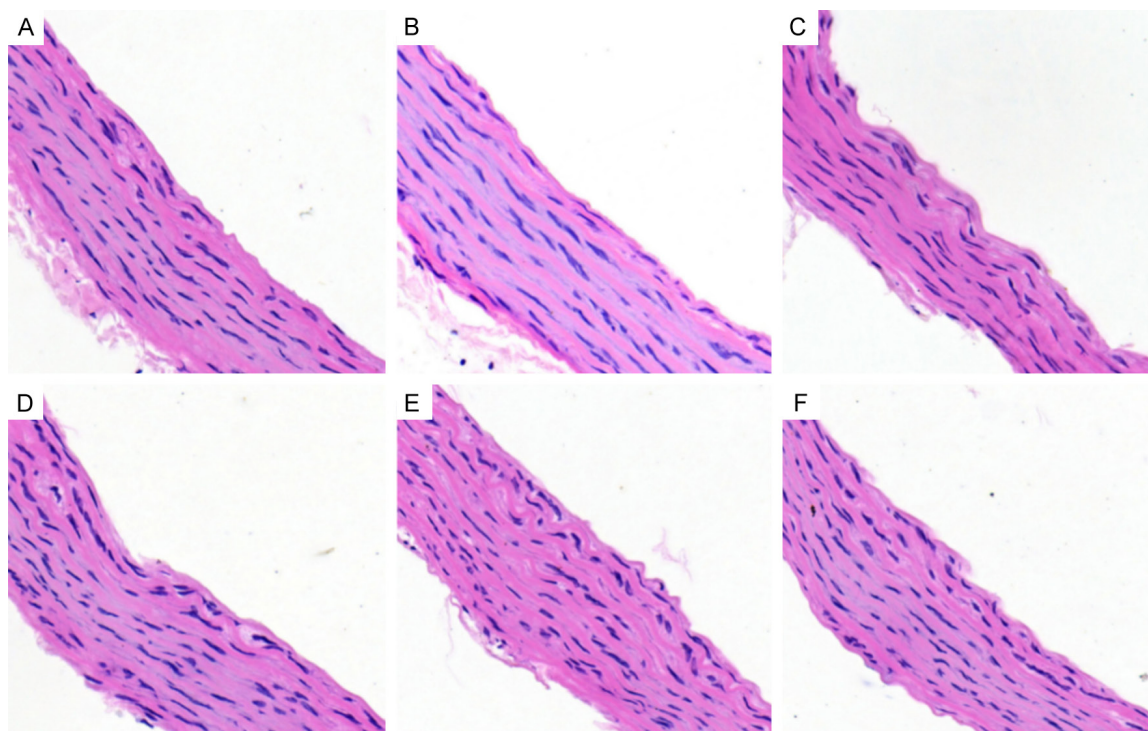
In this article, the representative images in **Figures 1-3** were not typical and were irregular in their arrangement, which increased the difficulty of reading and may have easily led to ambiguity for readers. Hence, we would like to publish this erratum to replace the **Figures 1-3**. The corrections made in this erratum do not affect the original conclusions. We apologize for any inconvenience or misunderstanding

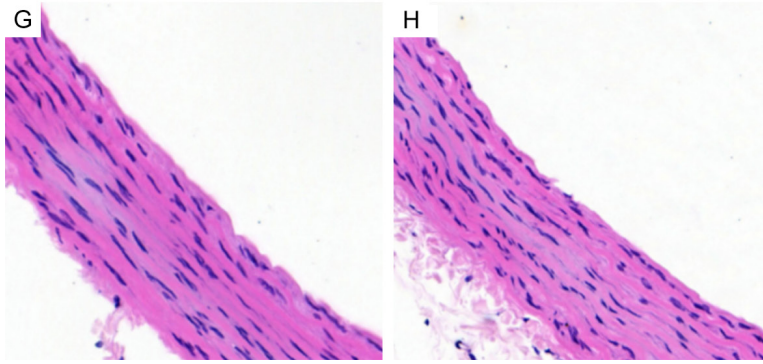
that these errors may have caused. The corrected **Figures 1-3** are as follows.

**Address correspondence to:** Peng Li, College of Pharmacy, Xinxiang Medical University, No. 601 Jinsui Road, Xinxiang 453003, Henan, China. Tel: 86-0373-3029918; Fax: 86-0373-3029918; E-mail: pengli@xxmu.edu.cn

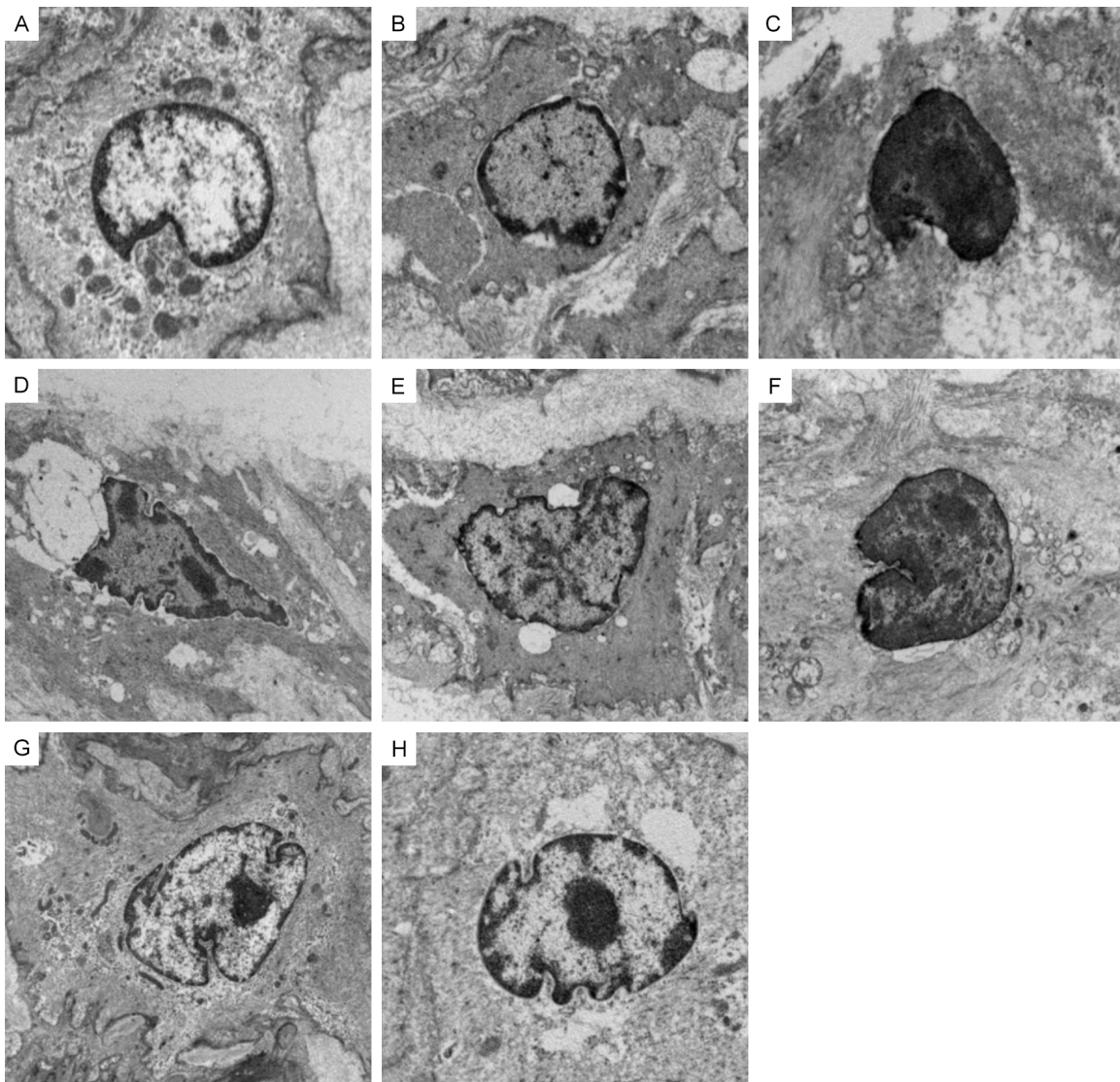


**Figure 1.** Observation of the common carotid artery with eyes (A: The normal control group; B: The drug-medium control group; C: The lovastatin group; D: The Zhibituo group; E: The model group; F: The low-dose XMJ group; G: The medium-dose XMJ group; H: The high-dose XMJ group).





**Figure 2.** Observation of common carotid artery under the light microscope (400×) (A: The normal control group; B: The drug-medium control group; C: The model group; D: The lovastatin group; E: The Zhibituo group; F: The low-dose XMJ group; G: The medium-dose XMJ group; H: The high-dose XMJ group).



**Figure 3.** Observation of endothelial cells in the common carotid artery of rats under the light microscope (1000×) (A: The normal control group; B: The drug-medium control group; C: The model group; D: The lovastatin group; E: The Zhibituo group; F: The low-dose XMJ group; G: The medium-dose XMJ group; H: The high-dose XMJ group).