

Original Article

Anticoagulant therapies versus heparin for the prevention of hemodialysis catheter-related complications: systematic review and meta-analysis of prospective randomized controlled trials

Jinrui Liu^{1*}, Chang'an Wang^{1*}, Hongfei Zhao², Jinghua Zhang¹, Jie Ma⁴, Yuanyuan Hou³, Hongbin Zou⁴

¹Department of Renal Transplantation and Nephropathy, The Seventh People's Hospital of Zhengzhou City, China; ²Department of Blood Transfusion, The Seventh People's Hospital of Zhengzhou City, China; ³Department of Pediatrics, The Second Part of the First Hospital, Jilin University, China; ⁴Department of Nephropathy, The Second Hospital of Jilin University, China. *Equal contributors.

Received June 10, 2015; Accepted August 1, 2015; Epub August 15, 2015; Published August 30, 2015

Abstract: Locking of central venous catheters with heparin is an accepted practice to maintain catheter patency between dialysis sessions. However, this practice may cause other adverse reactions. Although many studies suggest benefits of other catheter lock solutions over heparin on these grounds, no consensus has been reached for clinical practice. A systematic review and meta-analysis was performed of randomized controlled trials (RCT) that compared antimicrobial-containing or citrate-alone catheter lock solutions with heparin alone in patients undergoing hemodialysis with central venous catheters. Medline, Cochrane Central Register of Controlled Trials from EMBASE, and PubMed were searched for articles published through June 2014. The primary outcomes were catheter-related bacteremia (CRB) and catheter malfunction (CM). The secondary outcomes were bleeding, exit-site infection (ESI), clinical sepsis, and all-cause mortality. Seventeen RCTs met the inclusion criteria. The meta-analysis showed that antimicrobial-containing and citrate-alone lock solutions were superior to heparin for preventing CRB (both $P < 0.01$). Although antimicrobial-containing lock solutions significantly affected clinical sepsis ($P < 0.01$), they did not affect ESI, bleeding, or all-cause mortality. Incidence of CM episodes was lower in patients receiving antibiotics + heparin and gentamicin + citrate (both $P < 0.05$), while other antimicrobial-containing and citrate-alone lock solutions showed no difference. Only citrate-alone lock solutions significantly decreased bleeding and ESI episodes (both $P < 0.05$). Compared with heparin, antimicrobial-containing lock solutions more effectively prevent CRB and clinical sepsis. Antibiotics + heparin and gentamicin + citrate solutions showing better prevention of CM. Citrate-alone lock solutions result in fewer CRB, bleeding and ESI episodes.

Keywords: Catheter lock solutions, hemodialysis, heparin, meta-analysis

Introduction

The use of central venous catheters (CVCs) for vascular access is becoming increasingly common in patients without permanent vascular access [1]. Unfortunately, 25-50% of CVCs fail within the first year of insertion [2]. Moreover, CVCs are associated with increased levels of antibiotic exposure, longer hospital stays, higher health care costs, and higher mortality rates [3]. The main causes of these increased risks are catheter malfunction (CM) and catheter-related infection, especially catheter-related bloodstream infection (CRBI). Therefore, an

accepted practice is to lock the CVC lumen with an anticoagulant solution to prevent thrombosis, maintain catheter patency, and avoid infections between dialysis sessions. A variety of anticoagulants are available in China. A significantly lower risk of catheter occlusion, CRBI, and catheter colonization has been observed in heparin bonded-catheters compared to non-heparin-bonded catheters because of the efficacy, favorable side effect profile, and cost-effectiveness of diluted heparin solution; this solution has thus been routinely used as a locking solution for many years [4, 5]. In recent years, however, many studies have found that

diluted heparin increases the danger of systemic anticoagulation if it inadvertently overfills the lumen [1]. Therefore, the need for alternative anticoagulant locking solutions is imperative. A review of the literature shows that the current guidelines propose the use of antithrombotic locking solutions to prevent CM in patients undergoing hemodialysis; however, it is difficult to identify specific agents or concentrations because of the lack of definitive evidence regarding individual regimens.

Newer approaches including antimicrobial-containing catheter lock solutions and citrate-alone catheter lock solutions have been investigated to seek improvements in catheter patency and reduce adverse events. For example, citrate lock solutions reduce the incidence of heparin-associated bleeding complications [6] and catheter-related bacteremia (CRB) rates (1.1 vs 4.1 per 1000 catheter-days) [7]. Antibiotic catheter lock solutions reduce CRBI and catheter removal rates in patients undergoing hemodialysis [8]. Hemmelgarn *et al.* [9] compared the use of once-weekly recombinant tissue plasminogen activator (rt-PA) with the use of heparin three times weekly as locking solutions and found that once-weekly rt-PA significantly reduced the incidence of CM and CRBI. However, these findings have not been confirmed in similar studies. Several meta-analyses on anticoagulant locking solutions versus heparin have been performed in recent years. Zhao *et al.* [1] suggested that antimicrobial-containing citrate locks are more effective than heparin locks in the prevention of CRBI, while citrate alone fails to show a similar advantage. However, no difference in the efficacy of maintaining catheter patency between citrate and heparin locks was found. In fact, no method that can simultaneously prevent CRBI and CM has been identified. Therefore, we performed a meta-analysis focused on lock solutions containing anticoagulants (heparin, citrate) with or without antimicrobials for prevention of CM, CRB, bleeding, all-cause mortality, exit-site infection (ESI), and clinical sepsis in patients undergoing maintenance hemodialysis with CVCs.

Methods

Study selection

Two reviewers executed a search of Medline, the Cochrane Central Register of Controlled

Trials from EMBASE, and PubMed. The last search was conducted in June 2014. All spellings of hemodialysis, anticoagulants, and catheterization in the Medical Subject Headings (MeSH) were used alone and in combination. No language or date restrictions were applied. Only published prospective randomized controlled trials (RCTs) involving humans were included.

Study selection and outcomes

The inclusion criteria were as follows: the study was a prospective RCT, patients in the control arm received a heparin lock solution alone and the experimental groups received either heparin with antimicrobials, heparin with other anticoagulants, or other anticoagulants with or without antimicrobials. Sufficient data were present to allow for calculation of the risk ratio (RR) with 95% confidence interval (95% CI), and the follow-up period was > 30 days. The exclusion criteria were as follows: the CVCs were not used for hemodialysis, the study was retrospective, and the study did not involve humans.

The primary outcomes were CRB (defined as a positive bacterial blood culture drawn from the dialysis catheter) and CM (poor blood flow or the need for thrombolytic treatment). The secondary outcomes were any bleeding, ESI, clinical sepsis, and all-cause mortality.

Data extraction and quality assessment

Two investigators independently evaluated each study and recorded the eligibility, quality, and outcomes according to the inclusion and exclusion criteria. Data were extracted on baseline patient characteristics, interventions, number of patients, number of catheter-days, follow-up duration, and additional prophylactic measures used that may have affected the outcomes. Missing data were requested from the authors. The Cochrane quality criteria were used to conduct the quality assessment [10]. Disputes were resolved by consultation between the investigators.

Statistical analysis

Dichotomous and continuous variables in the treatment and control groups were expressed as the RR and weighted mean difference with 95% CI, respectively. Considering the inherent heterogeneity among the studies, we assumed

Catheter lock solutions for hemodialysis

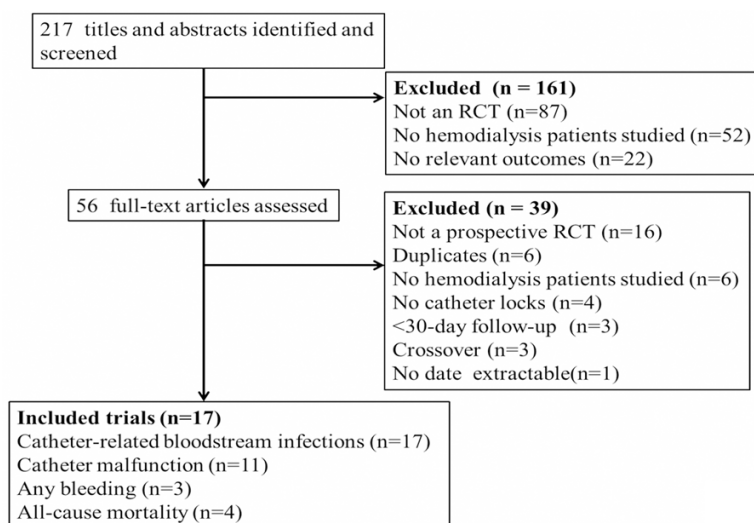


Figure 1. Flow diagram of study selection. RCT, randomized controlled trial.

the presence of statistical heterogeneity and used only a random-effects model (DerSimonian-Laird approach) before pooling the data. Heterogeneity of the results was measured using Cochran's Q test, and I^2 was used to quantify the heterogeneity [10]. Subgroup analysis was performed to explore the sources of heterogeneity and assess the sensitivity of the results. Sensitivity tests were performed according to the Cochrane method. A P value of < 0.05 was considered statistically significant for all analyses.

A funnel plot was used to detect publication bias. Data analysis was performed with Review Manager, version 5.0 (Copenhagen: The Nordic Cochrane Centre, The Cochrane Collaboration, 2008).

Results

Eligible studies

The literature search yielded 217 potentially relevant records, 161 of which were irrelevant. Fifty-six articles were further evaluated by full-text reading, and 39 articles were excluded (**Figure 1**). Thus, 17 RCTs conducted from 1998 through 2012 were included in this systematic review and meta-analysis [7, 9, 11-27] (**Table 1**).

The interventions in the RCTs included antimicrobial-containing lock solutions (13 trials, 1405 patients) [9, 12, 14-18, 20-22, 24-27] or

citrate-alone catheter lock solutions (4 trials, 604 patients) [7, 11, 13, 19]. All trials compared the intervention with a heparin catheter lock solution alone. The studies reported the rates of CRB (17 trials), CM (12 trials), ESI (10 trials), bleeding (3 trials), clinical sepsis (2 trials), and all-cause mortality at the end of follow-up (4 trials).

Although all included studies were identified as randomized, only seven trials [9, 11, 17, 19, 23, 27] described the method used to generate the random allocation sequence, and only two [17, 22] adequately described the allocation concealment.

Nine trials were double-blind [7, 9, 12, 17, 18, 22, 23, 27], one trial was patient-blinded [24], two trials were unclear [13, 20, 26], and all others were open-label [11, 14-16, 19, 21, 25]. The quality assessment of the included studies is shown in **Figure S1**.

CRB

All trials reported on CRB. The incidence of CRB was significantly lower in association with antimicrobial-containing lock solutions than with heparin alone (RR 0.32, 95% CI: 0.25-0.41; $P < 0.001$) (**Figure 2**). There was evidence that the incidence of CRB events was lower in association with citrate-alone locking solutions than with heparin (RR 0.43, 95% CI: 0.27-0.69; $P < 0.001$), with no significant heterogeneity among studies. However, a subgroup analysis was performed based on different catheter types, yielding an I^2 of 55%. Interestingly, there was no heterogeneity among studies using non-tunneled cuffed catheters (NTCC; $I^2 = 0\%$), whereas there was heterogeneity among those using tunneled cuffed catheters (TCC; $I^2 = 65\%$) (**Figure 3**). This indicates that the catheter type was a likely source of heterogeneity among studies.

CM

Of the 12 RCTs (1803 patients) that reported on CM, 8 RCTs (889 patients) focused on antimicrobial-containing lock solutions, and 4 RCTs

Catheter lock solutions for hemodialysis

Table 1. Characteristics of studies and patients fulfilling inclusion criterion

Ref.	Treatment	Control (U/mL H)	Patients (n)	Mean age (y)	DM (%)	CT	CD
Buturovic <i>et al.</i> 1998 [13]	4% citrate	5000	20	----	----	NTCC	740
Dogra <i>et al.</i> 2002 [17]	40 mg/mL CN + 3.13% citrate	5000	79	57.5	35	TCC	5923
Pervez <i>et al.</i> 2002 [9]	4 mg/mL CN + 4.67% citrate	1000	36	50.7	41.6	TCC	2924
Betjes <i>et al.</i> 2004 [16]	1.35% TD + 4% citrate	5000	58	54.3	27.5	TCC/NTCC	3404
McIntyre <i>et al.</i> 2004 [14]	5 mg/mL CN + 5000 U/mL H	5000	50	60.7	26	TCC	5722
Weijmer <i>et al.</i> 2005 [7]	30% citrate	5000	291	61.3	29.5	NTCC/TCC	16541
Nori <i>et al.</i> 2006 [25]	3 mg/mL MI + 30 mg/mL EDTA and 4 mg/mL CN + 3.13% citrate	5000	62	58.5	----	TCC	6189
Saxena <i>et al.</i> 2006 [12]	10 mg/mL CTX + 5000 U/mL H	5000	113	76.8	37.1	TCC	43435
Kim <i>et al.</i> 2006 [18]	10 mg/mL cefazolin + 5 mg/mL CN + 1000 U/mL H	1000	120	54.9	52.5	UC	4503
MacRae <i>et al.</i> 2008 [11]	4% citrate	5000	61	66	52.3	TCC	4091
Al-Hwiesh 2008 [20]	25 mg/mL VA + 40 mg/mL CN + 5000 U/mL H	5000	69	46.4	23.2	TCC	8854
Power <i>et al.</i> 2009 [19]	46.7% citrate	5000	232	64.5	27	TCC	36108
Zhang <i>et al.</i> 2009 [23]	4 mg/mL CN + 5500 U/mL H	5500	140	52.1	13.6	TCC	34080
Solomon <i>et al.</i> 2010 [22]	1.35% TD + 4% citrate	5000	107	58.2	----	TCC	17771
Campos <i>et al.</i> 2011 [15]	3 mg/mL MI + 30 mg/mL EDTA	5000	133	55	38	TCC/NTCC	8747
Sofroniadou <i>et al.</i> 2012 [27]	5 mg/mL VA + 2000 U/mL H and 2 mg/mL linezolid + 2000 U/mL H	2000	135	70.5	33.63	TCC/NTCC	5158
Moran <i>et al.</i> 2012 [24]	320 µg/mL CN + 4% citrate	1000	303	63.1	56.5	TCC	72760

CD, catheter-days; CN, gentamicin; CT, catheter type; CTX, cefotaxime; DM, diabetes mellitus; H, heparin; MI, minocycline; NTCC, non-tunneled cuffed catheter; TCC, tunneled cuffed catheter; TD, taurolidine; VA, vancomycin.

Catheter lock solutions for hemodialysis

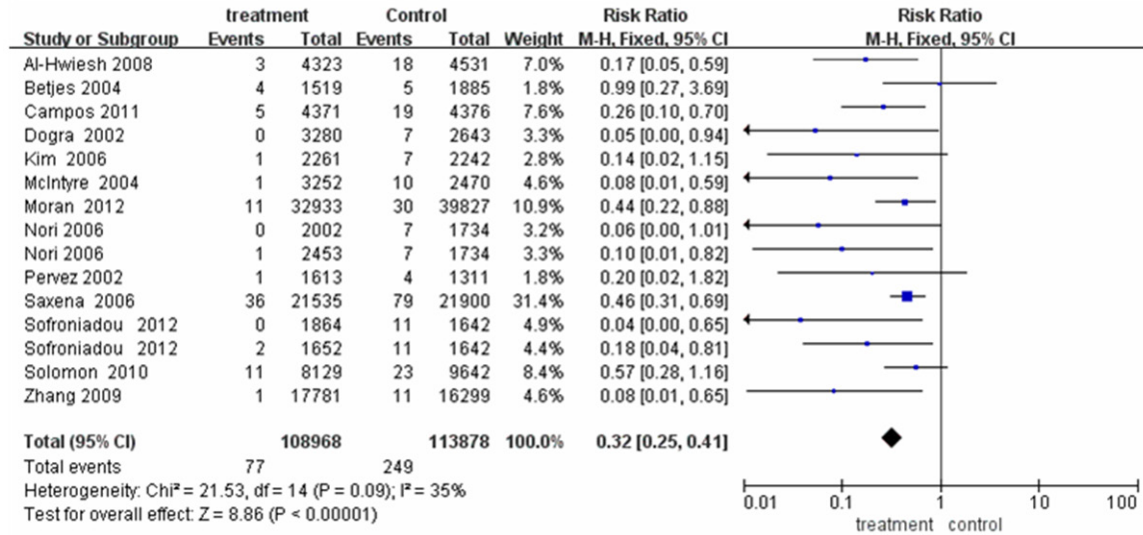


Figure 2. Catheter-related bloodstream infections per catheter-day. Analysis of studies comparing antimicrobial-containing lock solutions (treatment) and heparin alone (control). Risk ratio of < 1.0 favors treatment. Abbreviations: CI, confidence interval; M-H, Mantel-Haenszel.

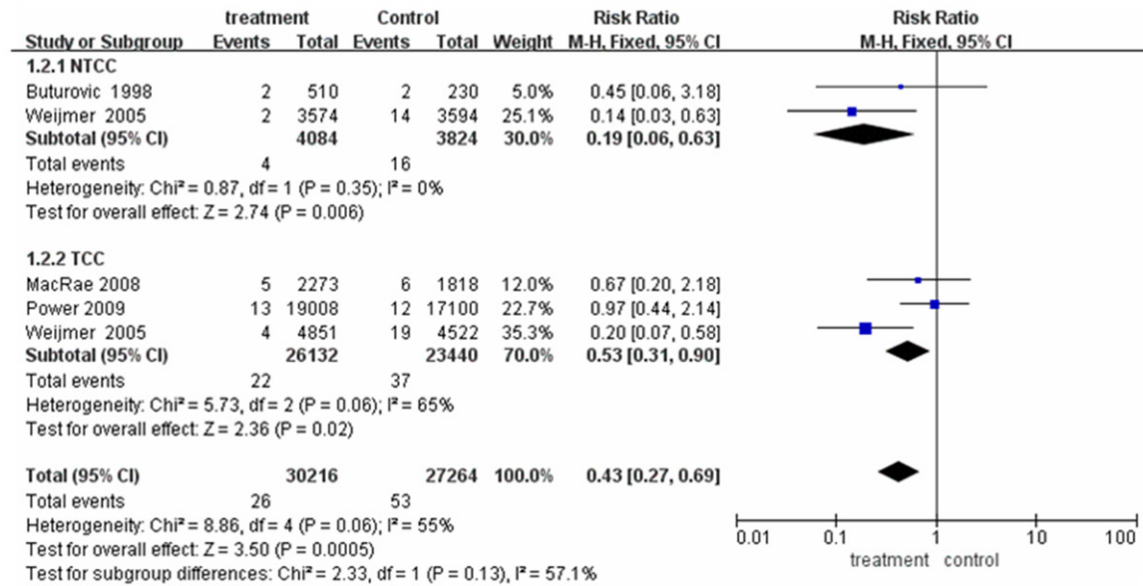


Figure 3. Catheter-related bloodstream infections per catheter-day. Analysis of studies comparing citrate-alone lock solutions (treatment) and heparin alone (control). The analysis is subcategorized by the different concentrations of citrate. Risk ratio of < 1.0 favors treatment. Abbreviations: CI, confidence interval; M-H, Mantel-Haenszel; NTCC, non-tunneled cuffed catheter; TCC, tunneled cuffed catheter.

(604 patients) focused on citrate-alone lock solutions. A subgroup analysis was performed focusing on different anticoagulants in the RCTs that evaluated antimicrobial-containing lock solutions. The subgroup analysis using a random-effects model suggested that antibiotics + heparin and gentamicin + citrate lock solutions more effectively prevented CM than

did heparin alone (RR 0.58, $P = 0.030$; and RR 0.67, $P = 0.003$, respectively). Lock solutions containing antibiotics + EDTA failed to significantly decrease CM events in comparison to heparin alone (**Figure 4**). Although there was an increase in CM events with taurolidine + citrate, this was based on the result of only one trial. This indicates that the heterogeneity in this

Catheter lock solutions for hemodialysis

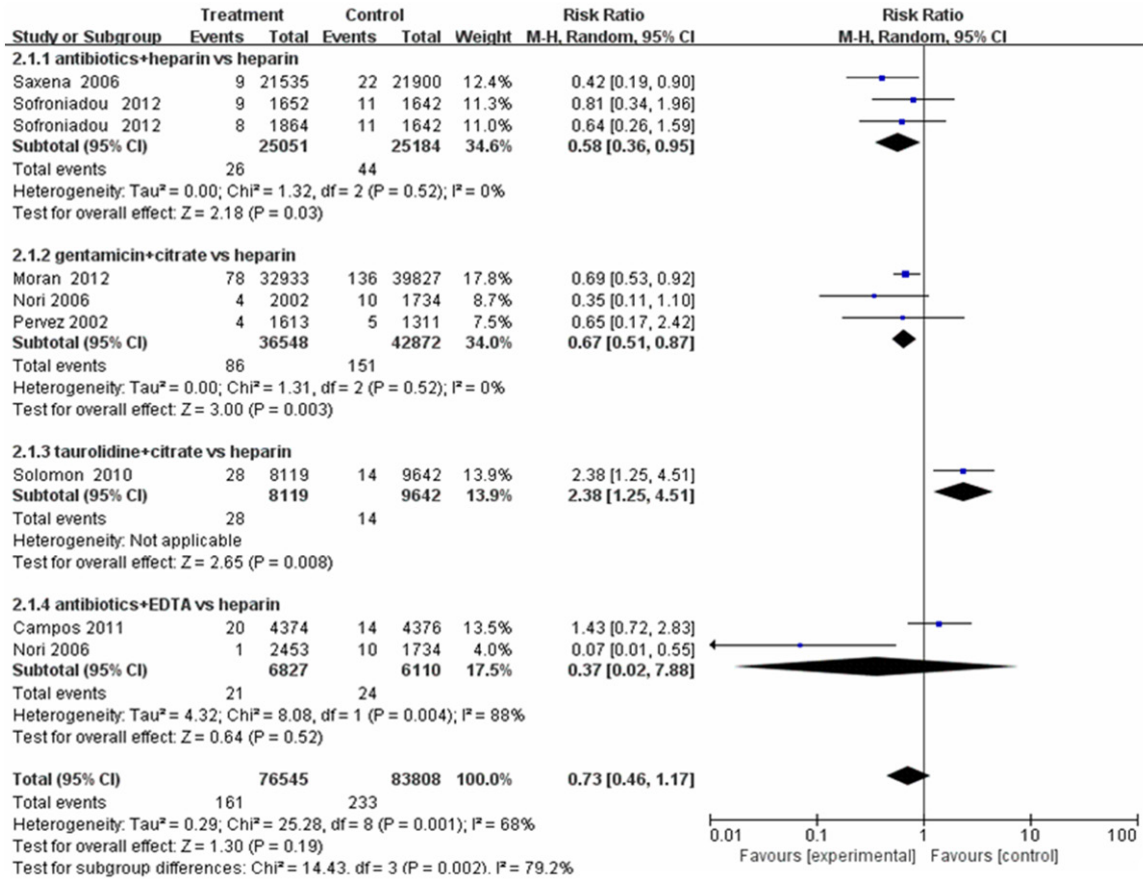


Figure 4. Catheter malfunctions per catheter-day. Analysis of studies comparing antimicrobial-containing lock solutions (treatment) and heparin alone (control). Risk ratio of < 1.0 favors treatment. Abbreviations: CI, confidence interval; M-H, Mantel-Haenszel.

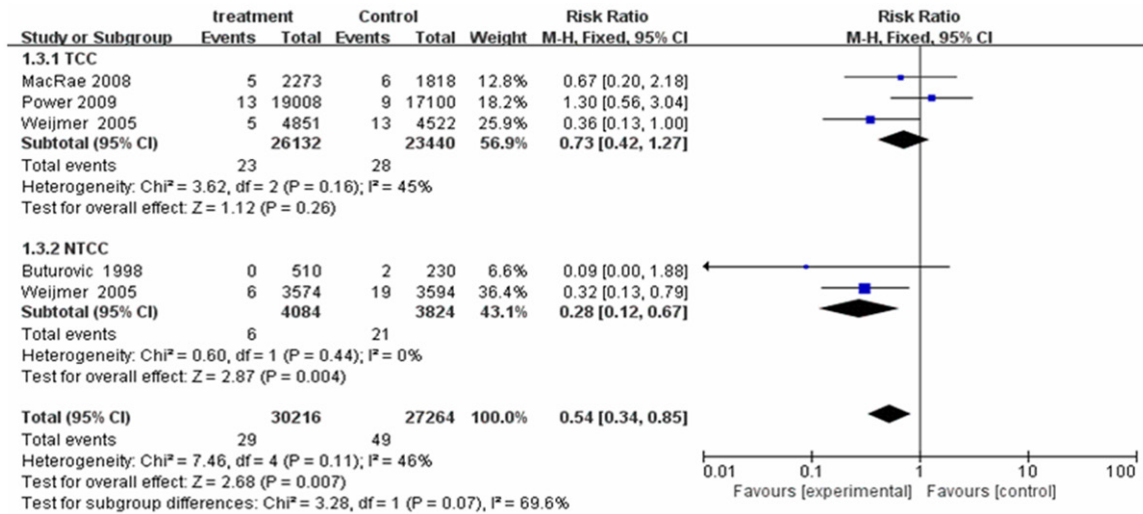


Figure 5. Exit-site infections per catheter-day. Analysis of studies comparing citrate-alone lock solutions (treatment) and heparin alone (control). Risk ratio of < 1.0 favors treatment. Abbreviations: CI, confidence interval; M-H, Mantel-Haenszel; NTCC, non-tunneled cuffed catheter; TCC, tunneled cuffed catheter.

Catheter lock solutions for hemodialysis

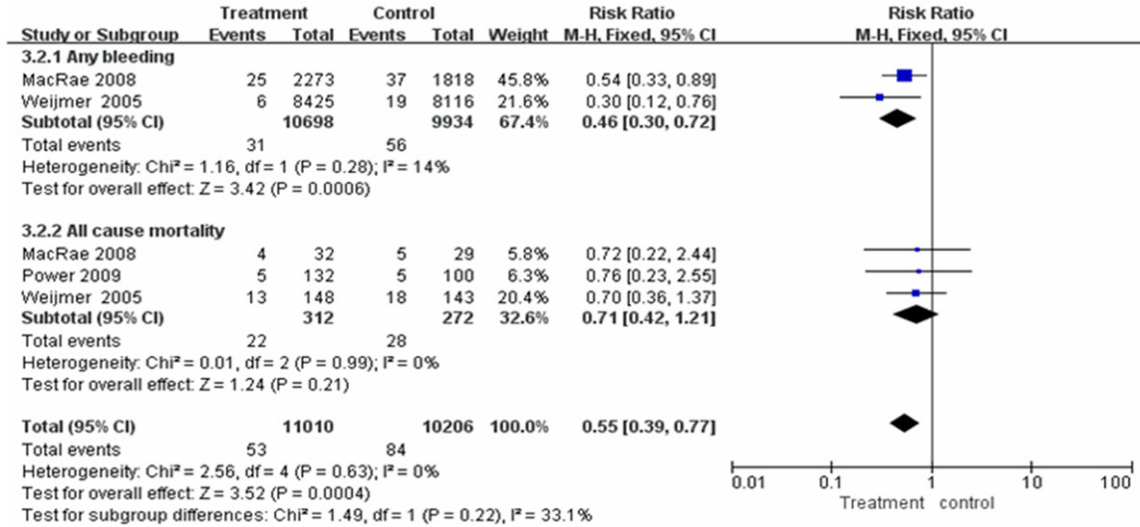


Figure 6. Secondary outcomes per catheter-day. Analysis of studies comparing citrate-alone lock solutions (treatment) and heparin alone (control). Risk ratio of < 1.0 favors treatment. Abbreviations: CI, confidence interval; M-H, Mantel-Haenszel.

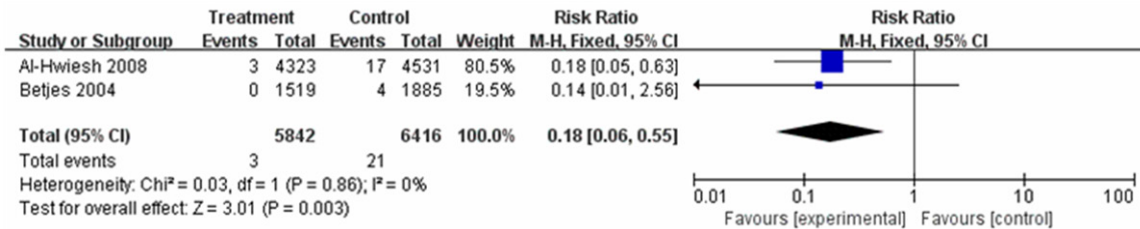


Figure 7. Clinical sepsis per catheter-day. Analysis of studies comparing antimicrobial-containing lock solutions (treatment) and heparin alone (control). Risk ratio of < 1.0 favors treatment. Abbreviations: CI, confidence interval; M-H, Mantel-Haenszel.

analysis (overall, $I^2 = 68\%$; $P = 0.001$) was likely due to the different catheter lock solutions. In the evaluation of citrate-alone lock solutions at different concentrations, two RCTs used a low-concentration, and two used a high-concentration group; the incidence of CM was similar between these two subgroups (Figure S2).

Secondary outcomes

Three RCTs (487 patients) evaluated the rate of bleeding events, and four RCTs (646 patients) compared all-cause mortality between two kinds of lock solutions. The rate of any type of bleeding per catheter-day was significantly lower in association with citrate-alone lock solutions than with heparin alone (RR 0.46, 95% CI: 0.30-0.72; $P < 0.001$) (Figure 5), with no heterogeneity among studies; however, there was no evidence that antimicrobial-con-

taining lock solutions reduced the rates of any bleeding episodes (Figure S3).

A total of 10 RCTs (1185 patients) described ESIs. Compared with heparin lock solutions, the overall summary RR using the fixed-effects model was 0.54 (95% CI: 0.34-0.85; $P = 0.007$). Further subgroup analysis was performed according to catheter types. Although the RR of NTCC subgroups had statistical significance (RR 0.28, 95% CI: 0.12-0.67; $P = 0.004$), no difference was identified in the TCC subgroups (RR 0.73, 95% CI: 0.42-1.27) (Figure 5). This indicates that catheter type was the likely source of heterogeneity among studies. The ESI incidence was similar between antimicrobial-containing lock solutions and heparin locks when used alone (RR 0.83, 95% CI: 0.57-1.21) (Figure S4).

Another secondary outcome was all-cause mortality, and no difference was found between any of the three types of interventions and the control groups, with no heterogeneity among studies (**Figure 6**; **Figure S3**). Meta-analysis using the fixed-effects model showed that antimicrobial-containing lock solutions are a better choice than heparin to avoid clinical sepsis (RR 0.18, 95% CI: 0.06-0.55; $P = 0.003$), with no heterogeneity among studies (**Figure 7**). A funnel plot analysis for the included trials revealed no evidence of publication bias (**Figure S5**).

Discussion

Although CVCs are considered inferior to arteriovenous fistulas and grafts in all nephrology guidelines, they are being increasingly used for hemodialysis vascular access [28]. However, a complication of long-term use of CVCs for hemodialysis is the high rate of infection and thrombus-related dysfunction [29]. More effective strategies to protect patients from these adverse events during hemodialysis are urgently needed. The use of heparin solutions to lock the CVC lumen has become a conventional method with which to avoid thrombosis between hemodialysis sessions [19]. In recent years, increasingly more experts have stated that heparin should be abandoned because it can induce rapid biofilm development and introduce a risk of bleeding secondary to overflow of heparin into the bloodstream [30]. Therefore, many new lock solutions have been developed, such as antimicrobial lock solutions, which are associated with lower rates of CRB and catheter removal than heparin in patients undergoing hemodialysis [8, 31]. However, such studies have not focused on avoiding poor flow, the thrombolytic treatment of catheters, or reduction of the rates of any bleeding events and all-cause mortality.

The results of the present meta-analysis indicate that antimicrobial-containing lock solutions (antibiotics + heparin, antibiotics + citrate, and antibiotics + EDTA) are associated with fewer CRB events than with citrate-alone lock solutions (low or high concentrations), which is consistent with some previous meta-analyses [3, 31, 34]. In addition, further analyses revealed that antimicrobial-containing lock solutions reduced the rate of clinical sepsis compared to heparin locks, but not ESI, bleed-

ing, or all-cause mortality. These results should be interpreted with caution until the results of more large-scale trials are available. Further studies should assess whether antibiotics increase the risk of bleeding.

rt-PA has primarily been used to treat catheter thrombosis [32]. Only one double-blind, randomized study of 23449 catheter-days in 225 patients compared heparin with rt-PA-heparin as catheter-lock solutions. The results of that study indicated that use of rt-PA once weekly instead of heparin may significantly reduce the incidence of CM, with rates of 1.76 cases per 100 catheter-days compared to 3.65 cases per 100 catheter-days in the heparin group [32]. However, additional RCTs are warranted to verify this result. The present study is the first meta-analysis to our knowledge that confirms the benefit of lock solutions containing antibiotics + heparin or gentamycin + citrate with regard to CMs.

Unlike heparin, citrate is rapidly metabolized to bicarbonate without causing systemic bleeding [1] and exhibits an antimicrobial effect [33]. Thus, citrate has drawn much interest in the medical field. Several studies have demonstrated the superiority of citrate in combination with other antimicrobials over heparin in avoiding CRB [17, 21, 24]. The present study shows that the use of citrate-alone lock solutions is associated with a significant reduction in the rate of CRB. In contrast, Zhao *et al.* [1] failed to find a benefit of citrate-alone solutions, but demonstrated that antimicrobial-containing citrate locks were superior to heparin locks in the prevention of CRB. The prevention of CRB with citrate-alone lock solutions has been controversial. Of four studies on CRB, only one RCT identified a difference between citrate and heparin lock solutions (RR, 0.26; 95% CI, 0.13-0.55) [7]. Thus, further high-quality randomized trials are needed to clarify the benefits of citrate alone for prevention of CRB.

With regard to ESI, only four studies met the criteria for inclusion in the meta-analysis, including one RCT that identified a significant reduction with citrate-only locks [7]. However, pooling of their results in a subgroup analysis by catheter type (NTCC and TCC) revealed a remarkable protective effect against ESI, which differed from the findings of a previous meta-

analysis [1]. This benefit was primarily due to NTCC-type catheters.

Bleeding rates appeared to be reduced by citrate-alone solutions. Although this result was based on two trials, it is consistent with previous literature [35]. Nevertheless, this finding should be interpreted with caution. In addition, Grudzinski *et al.* [6] reported that a high (46.7%) citrate concentration can induce fatal cardiac arrest, and thus the US Food and Drug Administration stated that it should not be used as a catheter-locking solution. Therefore, although it was determined that citrate alone cannot be used to reduce the risk of CRB, whether it can be used to avoid bleeding still requires additional large-scale RCTs.

Several limitations of our study should be addressed. First, because of the limited number of RCTs included in this meta-analysis, subgroup analyses based on parameters that could potentially contribute to heterogeneity, such as the age of patients, race, clinical complications, and catheter site were not possible. Second, there was insufficient data available to allow for analyses of side effects and disadvantages associated with the use of various solutions, such as length of hospital stay, health care costs, thrombolytic treatment, and catheter removal. Third, because the duration of each study varied, and the endpoints of different follow-up periods could modify the absolute risk, and thus affect the overall RR. Fourth, drug resistance associated with long-term use of antibiotics was not assessed in these trials. Finally, only the results of published trials were included in the data analysis; therefore, we cannot rule out publication bias. Regardless of these limitations, bias was minimized throughout the study via the study methods, data selection, quality evaluation, and funnel plot analysis. These procedures should enhance the stability and accuracy of this study.

In conclusion, this meta-analysis provides further evidence that antimicrobial-containing and citrate-alone lock solutions are superior to heparin in preventing CRB. Antimicrobial-containing lock solutions might also decrease clinical sepsis in hemodialysis patients. Solutions containing antibiotics + heparin or gentamycin + citrate may effectively reduce the incidence of CM. Citrate-alone lock solutions are associated with a lower incidence of bleeding episodes and ESI

compared to heparin. Additional prospective, long-term RCTs on other types of catheter lock solutions versus heparin are required to confirm these findings.

Disclosure of conflict of interest

None.

Address correspondence to: Dr. Hongbin Zou, Department of Nephropathy, The Second Hospital of Jilin University, Street No. 218, Changchun 130041, Jilin, China. Tel: +8613756663228; E-mail: zhb46-63615@163.com

References

- [1] Zhao Y, Li Z, Zhang L, Yang J, Yang Y, Tang Y and Fu P. Citrate versus heparin lock for hemodialysis catheters: a systematic review and meta-analysis of randomized controlled trials. *Am J Kidney Dis* 2014; 63: 479-490.
- [2] Firwana BM, Hasan R, Ferwana M, Varon J, Stern A and Gidwani U. Tissue plasminogen activator versus heparin for locking dialysis catheters: A systematic review. *Avicenna J Med* 2011; 1: 29-34.
- [3] Safdar N and Maki DG. Use of vancomycin-containing lock or flush solutions for prevention of bloodstream infection associated with central venous access devices: a meta-analysis of prospective, randomized trials. *Clin Infect Dis* 2006; 43: 474-484.
- [4] Pettigrew M, Soltys GI, Bell RZ, Daniel N, Davis JR, Senecal L and Leblanc M. Tinzaparin reduces health care resource use for anticoagulation in hemodialysis. *Hemodial Int* 2011; 15: 273-279.
- [5] Shah PS and Shah N. Heparin-bonded catheters for prolonging the patency of central venous catheters in children. *Cochrane Database Syst Rev* 2014; 2: Cd005983.
- [6] Grudzinski L, Quinan P, Kwok S and Pierratos A. Sodium citrate 4% locking solution for central venous dialysis catheters—an effective, more cost-efficient alternative to heparin. *Nephrol Dial Transplant* 2007; 22: 471-476.
- [7] Weijmer MC, van den Dorpel MA, Van de Ven PJ, ter Wee PM, van Geelen JA, Groeneveld JO, van Jaarsveld BC, Koopmans MG, le Poole CY, Schrandt-Van der Meer AM, Siegert CE and Stas KJ. Randomized, clinical trial comparison of trisodium citrate 30% and heparin as catheter-locking solution in hemodialysis patients. *J Am Soc Nephrol* 2005; 16: 2769-2777.
- [8] Yahav D, Rozen-Zvi B, Gafter-Gvili A, Leibovici L, Gafter U and Paul M. Antimicrobial lock solutions for the prevention of infections associat-

Catheter lock solutions for hemodialysis

- ed with intravascular catheters in patients undergoing hemodialysis: systematic review and meta-analysis of randomized, controlled trials. *Clin Infect Dis* 2008; 47: 83-93.
- [9] Hemmelgarn BR, Moist LM, Lok CE, Tonelli M, Manns BJ, Holden RM, LeBlanc M, Faris P, Barre P, Zhang J and Scott-Douglas N. Prevention of dialysis catheter malfunction with recombinant tissue plasminogen activator. *N Engl J Med* 2011; 364: 303-312.
- [10] Higgins JPT and Green S. *Cochrane Handbook for Systematic Reviews of Interventions Version 5.1.0 [updated March 2011]. The Cochrane Collaboration 2011.*
- [11] Macrae JM, Dojcinovic I, Djurdjev O, Jung B, Shalansky S, Levin A and Kiaii M. Citrate 4% versus heparin and the reduction of thrombosis study (CHARTS). *Clin J Am Soc Nephrol* 2008; 3: 369-374.
- [12] Saxena AK, Panhotra BR, Sundaram DS, Morsy MN and Al-Ghamdi AM. Enhancing the survival of tunneled haemodialysis catheters using an antibiotic lock in the elderly: a randomised, double-blind clinical trial. *Nephrology (Carlton)* 2006; 11: 299-305.
- [13] Buturovic J, Ponikvar R, Kandus A, Boh M, Klinkmann J and Ivanovich P. Filling hemodialysis catheters in the interdialytic period: heparin versus citrate versus polygeline: a prospective randomized study. *Artif Organs* 1998; 22: 945-947.
- [14] McIntyre CW, Hulme LJ, Taal M and Fluck RJ. Locking of tunneled hemodialysis catheters with gentamicin and heparin. *Kidney Int* 2004; 66: 801-805.
- [15] Campos RP, do Nascimento MM, Chula DC and Riella MC. Minocycline-EDTA lock solution prevents catheter-related bacteremia in hemodialysis. *J Am Soc Nephrol* 2011; 22: 1939-1945.
- [16] Betjes MG and van Agteren M. Prevention of dialysis catheter-related sepsis with a citrate-taurolidine-containing lock solution. *Nephrol Dial Transplant* 2004; 19: 1546-1551.
- [17] Dogra GK, Herson H, Hutchison B, Irish AB, Heath CH, Golledge C, Luxton G and Moody H. Prevention of tunneled hemodialysis catheter-related infections using catheter-restricted filling with gentamicin and citrate: a randomized controlled study. *J Am Soc Nephrol* 2002; 13: 2133-2139.
- [18] Kim SH, Song KI, Chang JW, Kim SB, Sung SA, Jo SK, Cho WY and Kim HK. Prevention of uncuffed hemodialysis catheter-related bacteremia using an antibiotic lock technique: a prospective, randomized clinical trial. *Kidney Int* 2006; 69: 161-164.
- [19] Power A, Duncan N, Singh SK, Brown W, Dalby E, Edwards C, Lynch K, Prout V, Cairns T, Griffith M, McLean A, Palmer A and Taube D. Sodium citrate versus heparin catheter locks for cuffed central venous catheters: a single-center randomized controlled trial. *Am J Kidney Dis* 2009; 53: 1034-1041.
- [20] Al-Hwiesh AK. Tunneled catheter-antibiotic lock therapy for prevention of dialysis catheter-related infections: a single center experience. *Saudi J Kidney Dis Transpl* 2008; 19: 593-602.
- [21] Maki DG, Ash SR, Winger RK and Lavin P. A novel antimicrobial and antithrombotic lock solution for hemodialysis catheters: a multi-center, controlled, randomized trial. *Crit Care Med* 2011; 39: 613-620.
- [22] Solomon LR, Cheesbrough JS, Ebah L, Al-Sayed T, Heap M, Millband N, Waterhouse D, Mitra S, Curry A, Saxena R, Bhat R, Schulz M and Diggle P. A randomized double-blind controlled trial of taurolidine-citrate catheter locks for the prevention of bacteremia in patients treated with hemodialysis. *Am J Kidney Dis* 2010; 55: 1060-1068.
- [23] Mokrzycki MH, Jean-Jerome K, Rush H, Zdunek MP and Rosenberg SO. A randomized trial of minidose warfarin for the prevention of late malfunction in tunneled, cuffed hemodialysis catheters. *Kidney Int* 2001; 59: 1935-1942.
- [24] Moran J, Sun S, Khababa I, Pedan A, Doss S and Schiller B. A randomized trial comparing gentamicin/citrate and heparin locks for central venous catheters in maintenance hemodialysis patients. *Am J Kidney Dis* 2012; 59: 102-107.
- [25] Nori US, Manoharan A, Yee J and Besarab A. Comparison of low-dose gentamicin with minocycline as catheter lock solutions in the prevention of catheter-related bacteremia. *Am J Kidney Dis* 2006; 48: 596-605.
- [26] Davanipur M, Pakfetrat M and Roozbeh J. Cloxacillin as an antibiotic lock solution for prevention of catheter-associated infection. *Iran J Kidney Dis* 2011; 5: 328-331.
- [27] Sofroniadou S, Revela I, Smirloglou D, Makriniotou I, Zerbala S, Kouloubinis A, Samonis G and Iatrou C. Linezolid versus vancomycin antibiotic lock solution for the prevention of nontunneled catheter-related blood stream infections in hemodialysis patients: a prospective randomized study. *Semin Dial* 2012; 25: 344-350.
- [28] Mandolfo S, Acconcia P, Bucci R, Corradi B, Farina M, Rizzo MA and Stucchi A. Hemodialysis tunneled central venous catheters: five-year outcome analysis. *J Vasc Access* 2014; 15: 461-465.
- [29] Van Der Meersch H, De Bacquer D, Vandecasteele SJ, Van den Bergh B, Vermeiren

Catheter lock solutions for hemodialysis

- P, De Letter J and De Vriese AS. Hemodialysis Catheter Design and Catheter Performance: A Randomized Controlled Trial. *Am J Kidney Dis* 2014; 64: 902-8.
- [30] Mandolfo S. [Central venous catheter lock to prevent thrombosis and bacterial infection]. *G Ital Nefrol* 2012; 29: 301-307.
- [31] Snaterse M, Ruger W, Scholte Op Reimer WJ and Lucas C. Antibiotic-based catheter lock solutions for prevention of catheter-related bloodstream infection: a systematic review of randomised controlled trials. *J Hosp Infect* 2010; 75: 1-11.
- [32] Tumlin J, Goldman J, Spiegel DM, Roer D, Ntoso KA, Blaney M, Jacobs J, Gillespie BS and Begelman SM. A phase III, randomized, double-blind, placebo-controlled study of tenecteplase for improvement of hemodialysis catheter function: TROPICS 3. *Clin J Am Soc Nephrol* 2010; 5: 631-636.
- [33] Shanks RM, Sargent JL, Martinez RM, Graber ML and O'Toole GA. Catheter lock solutions influence staphylococcal biofilm formation on abiotic surfaces. *Nephrol Dial Transplant* 2006; 21: 2247-2255.
- [34] Moore CL, Besarab A, Ajluni M, Soi V, Peterson EL, Johnson LE, Zervos MJ, Adams E, Yee J. Comparative effectiveness of two catheter locking solutions to reduce catheter-related bloodstream infection in hemodialysis patients. *Clin J Am Soc Nephrol* 2014; 9: 1232-1239.
- [35] Pierce DA, Rocco MV. Trisodium citrate: an alternative to unfractionated heparin for hemodialysis catheter dwells. *Pharmacotherapy* 2010; 30: 1150-1158.

Catheter lock solutions for hemodialysis

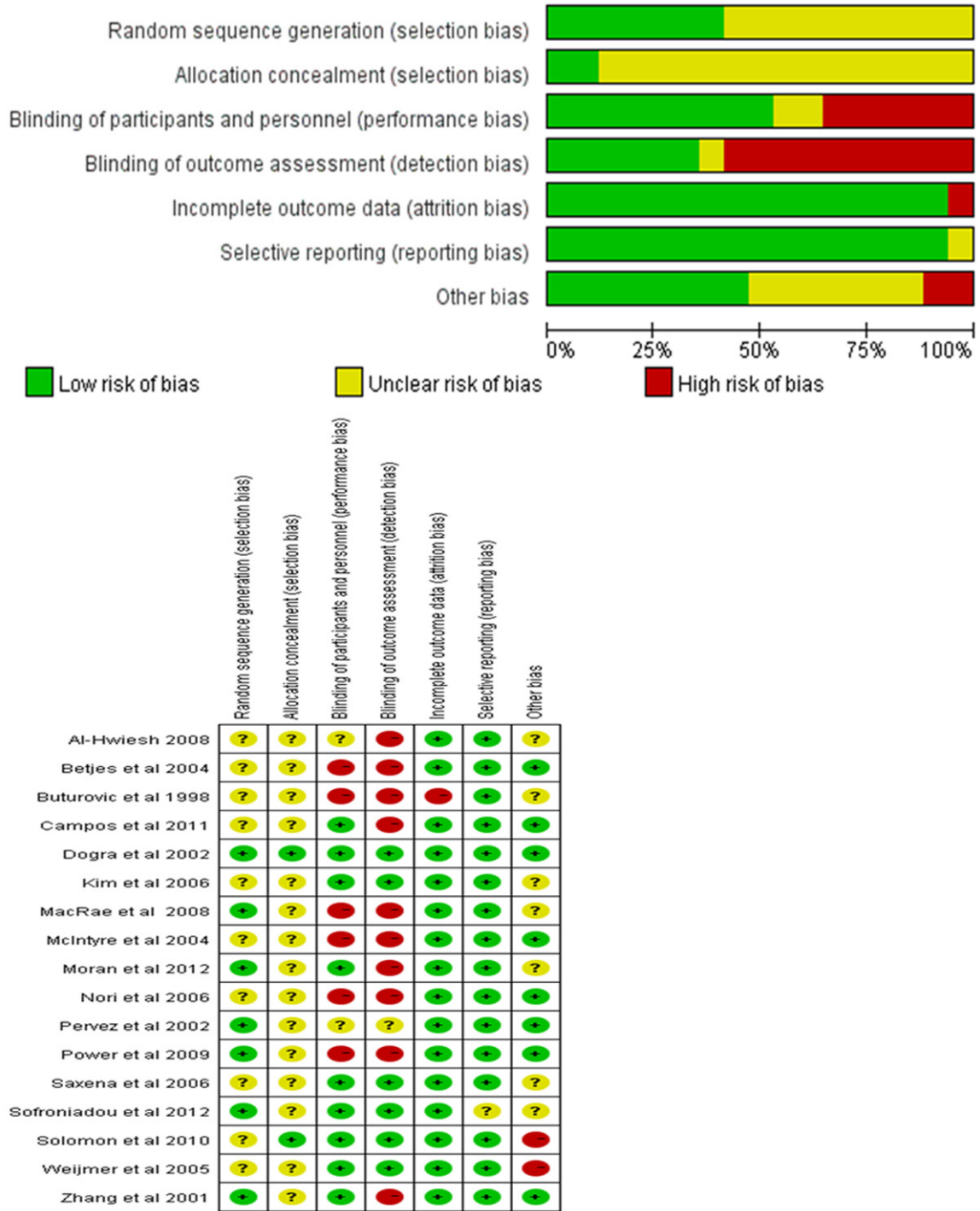


Figure S1. Quality assessment of included studies.

Catheter lock solutions for hemodialysis

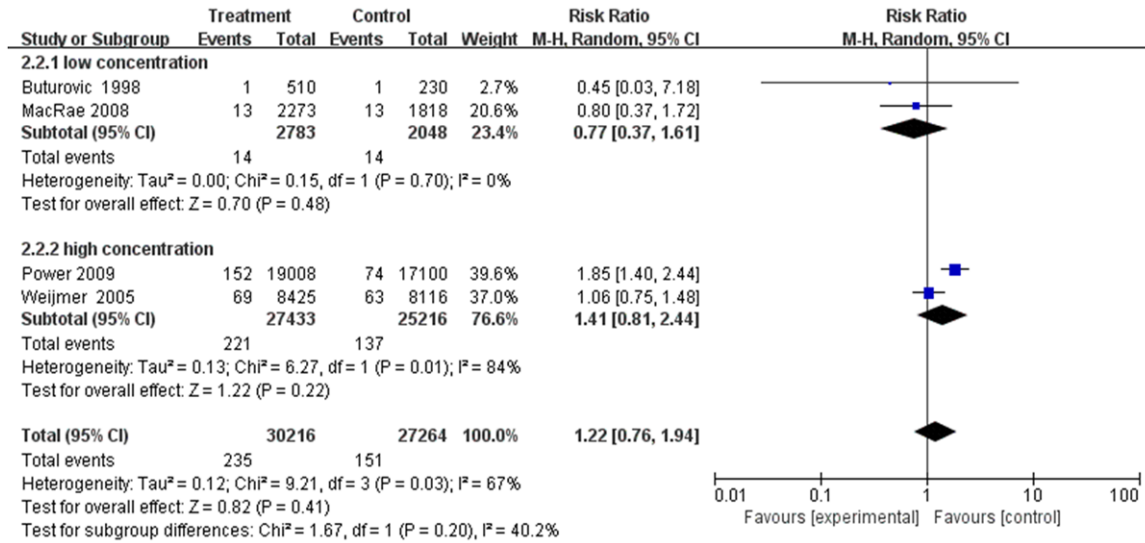


Figure S2. Catheter malfunctions per catheter-day. Analysis of studies comparing citrate-alone lock solutions (treatment) and heparin alone (control). The analysis is subcategorized by the different concentrations of citrate. Risk ratio of < 1.0 favors treatment. Abbreviations: CI, confidence interval; M-H, Mantel-Haenszel.

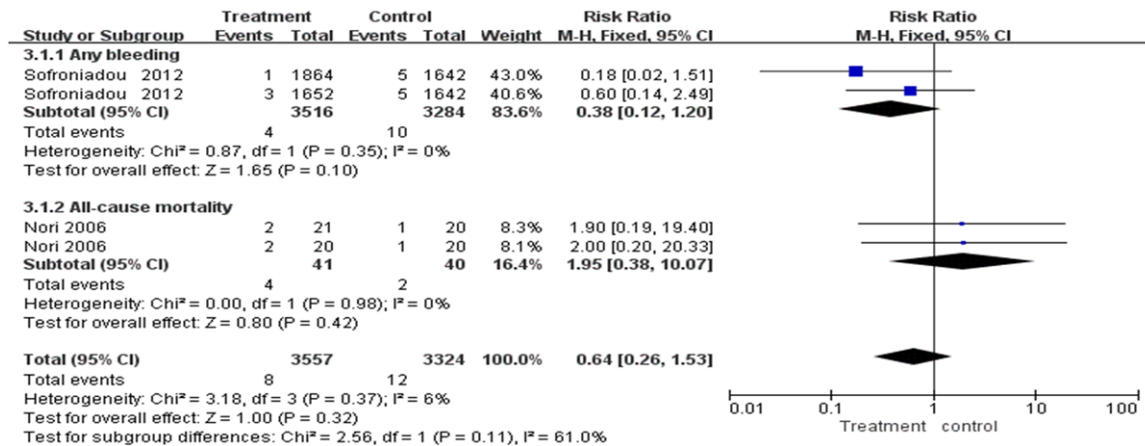


Figure S3. Secondary outcomes per catheter-day. Analysis of studies comparing antimicrobial-containing lock solutions (treatment) and heparin alone (control). Risk ratio of < 1.0 favors treatment. Abbreviations: CI, confidence interval; M-H, Mantel-Haenszel.

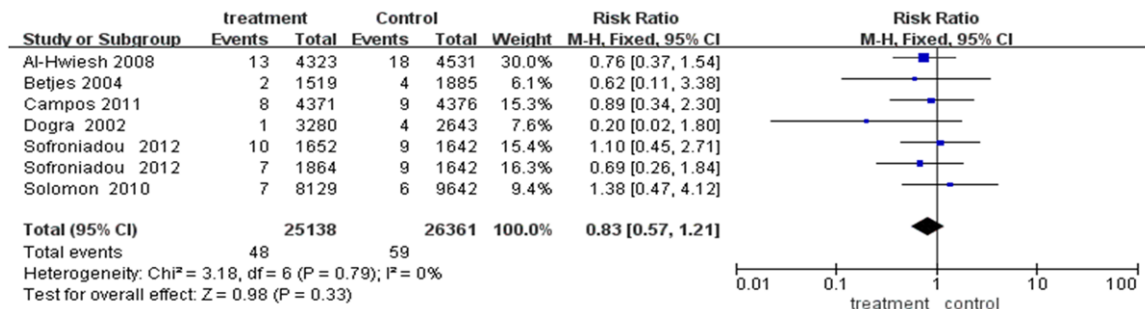


Figure S4. Exit-site infections per catheter-day. Analysis of studies comparing antimicrobial-containing lock solutions (treatment) and heparin alone (control). Risk ratio of < 1.0 favors treatment. Abbreviations: CI, confidence interval; M-H, Mantel-Haenszel.

Catheter lock solutions for hemodialysis

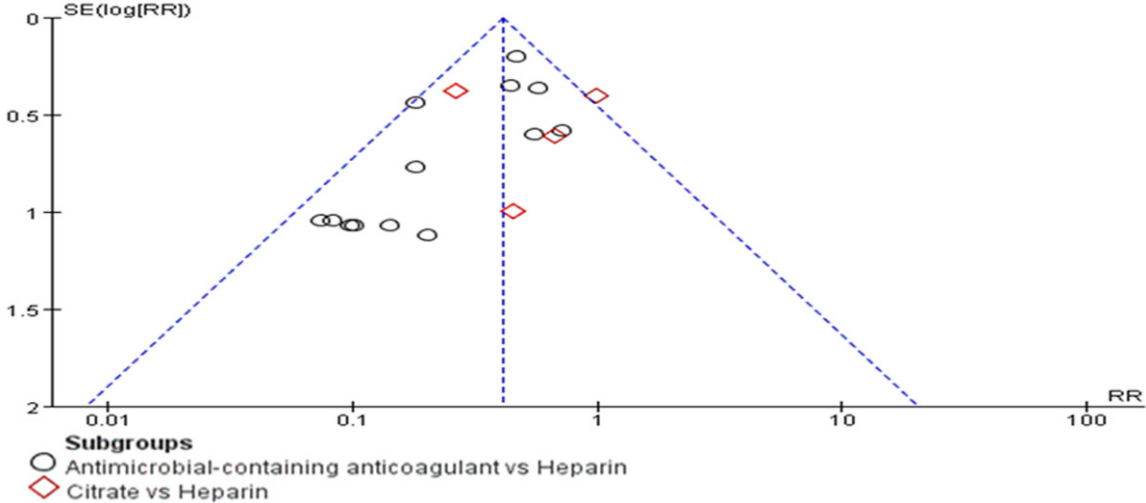


Figure S5. Funnel plot of 19 trials on the effect of different catheter anticoagulation treatments on catheter-related bloodstream infections per catheter-day in patients undergoing hemodialysis.