

Erratum

Histological characteristics following a long-term nitrate-rich diet in miniature pigs with parotid atrophy: Int J Clin Exp Pathol. 2015; 8(6): 6225-6234

Dengsheng Xia^{1*}, Xingmin Qu^{1*}, Simon D Tran², Laura L Schmidt², Lizheng Qin¹, Chunmei Zhang¹, Xiuyu Cui³, Dajun Deng⁴, Songlin Wang¹

¹Salivary Gland Disease Center and Beijing Key Laboratory of Tooth Regeneration and Function Reconstruction, Capital Medical University School of Stomatology, Beijing, China; ²Faculty of Dentistry, McGill University, Montreal, Canada; ³Institute for Neuroscience, Capital Medical University, Beijing, China; ⁴Key Laboratory of Carcinogenesis and Translational Research, Peking University Cancer Hospital and Institute, Beijing, China. *Equal contributors.

Received November 2, 2019; Accepted November 25, 2019; Epub December 1, 2019; Published December 15, 2019

In this article published in IJCEP, the original **Figure 1** needed correction and was replaced with the correct **Figure 1**.

As a result of a figure assembly error, the **Figure 1F** and **1L** were mistakenly similar to **Figure 1B** and **1D**. However, this does not affect the scientific conclusion of the article. The authors express regret for any confusion this may have caused.

Address correspondence to: Dr. Songlin Wang, Salivary Gland Disease Center and Beijing Key Laboratory of Tooth Regeneration and Function Reconstruction, Capital Medical University School of Stomatology, 4 Tian Tan Xi Li, Dongcheng District, Beijing 100050, China. E-mail: slwang@ccmu.edu.cn

Histological characteristics following long-term

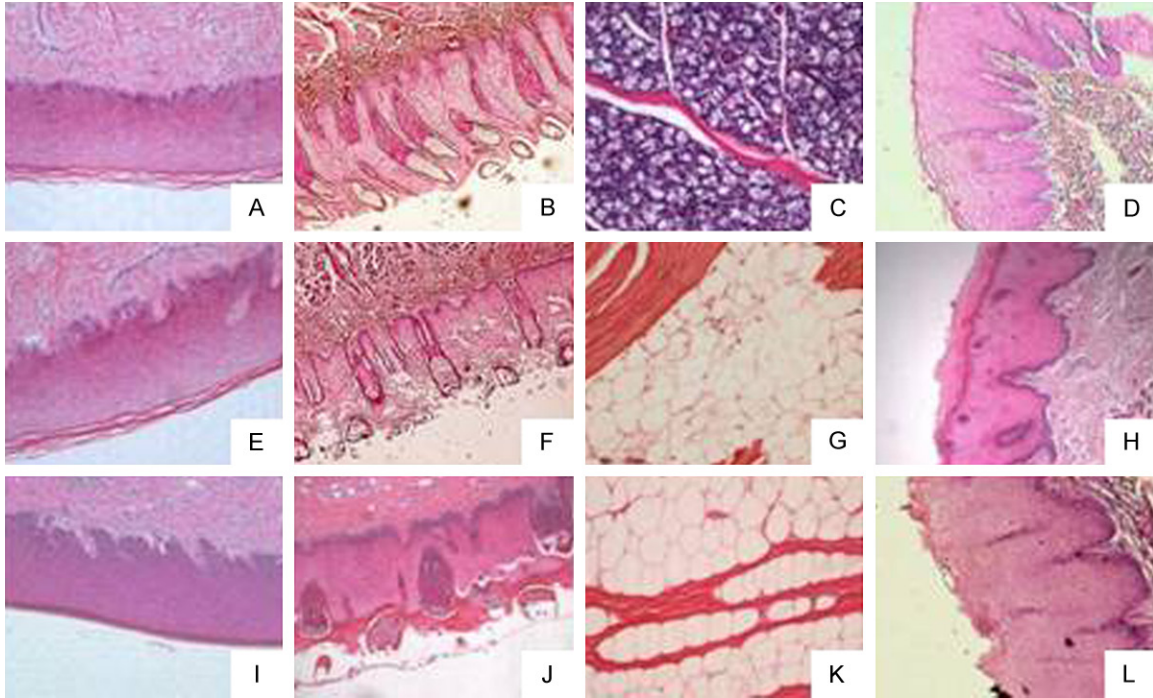


Figure 1. Light micrographs of four oral tissues stained with hematoxylin and eosin. A-D: Represent gingiva, glossal tissue, parotid gland, and buccal mucosa, respectively, from control miniature pigs; E-H: Represent the four tissues from parotid-atrophied miniature pigs; I-L: Represent the four tissues from parotid-atrophied miniature pigs supplemented with nitrate.